

ALABAMA ONE CALL

2000 ANNUAL SUMMARY

As Alabama One Call (AOC) completed its 25th year of operation and moved into the “new millennium”, it was apparent that we have continued to grow in our operation and the services we provide to our members.

In keeping with the trends of the last few years, Alabama One Call once again experienced an increase in our annual locate request volume. During 2000, the AOC processed 371,980 locate requests which was once again, a 15% increase over our previous year volume. The volumes of locate requests processed in 2000, resulted in a 2.8 million outbound transmissions to our members who protect their underground facilities within Alabama.

After our major increase in membership in 1999, we expected to experience a lower membership increase for 2000. However, even with that expectation, we increased the number of underground facility owners protecting their underground in Alabama by thirty (30); nearly a third of the previous year. This increase brought our membership count up to 335 as of the end of December.

Our greatest accomplishment and largest undertaking during 2000, was the conversion of our new computer system to a new windows, internet/intranet system. The system was cut over in steps, with the first step being delivery and then we slowly cut over our operators to using the new system. We were able to expand our locate request information format and obtain additional information from the callers.

One of the nicest features of this system is the ability to transmit locate requests to our members via email delivery. We have had very positive response from our members who have begun to use this option and more of our members are converting daily.

Alabama One Call is continuing to support the national advertising campaign; “Dig Safely”, by redesigning our advertising message for both our print advertisements and specialty handout items. The “Dig Safely” campaign takes the traditional message of “call before you dig” further by looking at the entire damage prevention process. This campaign educates on a four step process of digging safely. These four steps are 1) Call Before You Dig; 2) Wait the Required Amount of Time; 3) Respect the Marks and 4) Dig with Care. We are training excavators to think of the entire “dig safely” message when working around the buried facilities and that “calling before you dig” is only the initial step in damage prevention.

As part of this program, the AOC has produced a 30 second television spot that we will be providing to our cable television member companies in the upcoming year requesting Public Service Announcement airtime for the “Dig Safely” message.

We also provided Dig Safely training to our member companies educating them on the new education message and provided each member with a “Dig Safely” media kit which included camera ready artwork for advertisements and bill stuffers, prepared news release and background information on the program.

As reported last year, in June 1999, the Best Practices, known as "Common Ground" was presented to Congress. From this report the "Common Ground Alliance" was formed which is an association for the purpose of promoting and enhancing the Best Practices through the utility and excavation communities. Additional information for the Common Ground Alliance can be found at their website, <http://www.commongroundalliance.com>.

The two major projects on the horizon for 2001 will be the completion of our new computer system transition. The two programs to be finalized and implemented include the ability for approved excavators to enter locate requests remotely via the internet and the conversion of our notification database to a truly automated mapping system based on latitude and longitude. The success of the mapping conversion will be very dependent on the response we receive from our members in getting their database transferred to the new system and approved.

The future for Alabama One Call and the one call industry, as a whole, seems to be unlimited. We continue to strive each year to remain current with the technology that can benefit both our member companies and the excavating public to ensure public safety and the protection of the buried facilities and also improve the effectiveness and efficiencies of the one call service. And as always, it is only through the support of our participating members that we continue to improve in the services we provide.

Annette R. Reburn
Executive Director

ALABAMA ONE-CALL MEMBERSHIP LIST

AT&T
AT&T Local Services
Air Products & Chemicals
Alabama Gas Corporation
Alabama Power Company
Alabama TV Cable (a TCI Company)
Alabaster Water Board
AlaTenn Pipeline Company
Albertville Housing Authority
Alexander City, City of
Alexander City Housing Authority
Aliceville Housing Authority
AllTel Alabama, Inc.
Alta Vista Manor Apartments
American MetroComm Corp.
Amoco Pipeline Company
Anniston Water Works and Sewer Board
Arab Housing Authority
Ashton Place Apartments
Athens Housing Authority
Athens Utilities, City of
Atmore, City of
Attalla Housing Authority
Auburn Water Works Board, City of
Baldwin County Cable
Baldwin County EMC
Baldwin County Sewer Service
Bakerhill Water Authority
Bay Gas Storage Company, Inc.
Bay Minette Utilities Board
Bayou La Batre Utilities
Bear Creek/Hackleburg/Phil Campbell Housing
BellSouth
Berry Gas Board
Berry Housing Authority
Birmingham Cable Communications
Birmingham Water Works & Sewer Board
Bishop Petroleum, Inc.
Black Box Network Svcs, Inc. – Gov. Solutions
Black Warrior Methane Corporation
Blountsville Housing Authority
Boaz Gas Board
Boaz Water and Sewer Board
Bonnie Doone Apartments
Boston, Housing Authority of
Brent Housing Authority
Brewton, City of
Bridgeport Utilities
Brindlee Mountain Telephone Company
Brookside, Town of
Butler, Town of Utilities Board
Cable Alabama Corporation
Cable One
Calera and Montevallo Housing Authority
Calera Water & Gas Board
Callon Offshore Production, Inc.
Camp Hill, Town of
Canoe Water & Fire Protection Authority
Carbon Hill Housing Authority
Carbon Hill Utilities Board
Carroll's Creek Water Authority
Carrollton Housing Authority
Central Alabama Electric Cooperative
Charter Communications – Alexander City
Charter Communications – Athens
Charter Communications – Birmingham
Charter Communications – Decatur
Charter Communications – Hartselle
Charter Communications – Lanett
Charter Communications – Tuscaloosa
Cherokee Manor Apartments
Cherokee Water and Gas Department
Chevron U.S.A. Inc.
Childersburg Water, Sewer & Gas Board
Chilton Water Authority
Clarke-Mobile Counties Gas District
Clayton Housing Authority
Cogasco, Inc.
Colonial Pipeline
Colony Apartments
Columbia Square Apartments
Columbiana Gas Board
Columbiana Housing Authority
Com-Link, Inc.
Comcast Cablevision of Gadsden
Comcast Cablevision (Huntsville)
Comcast Cablevision (Mobile)
Comcast Cablevision of the Shoals
Comcast Cablevision (Tuscaloosa)
Conecuh-Monroe Counties Gas District
Cordova Housing Authority
Cordova Water and Gas
Cottonwood Housing Authority
Coweta Apartments

ALABAMA ONE-CALL MEMBERSHIP LIST

Cullman Housing Authority
Cullman-Jefferson Counties Gas District
Cullman Water Department, City of
Dadeville Housing Authority
Dadeville Water Supply & Gas Board
Daphne Utilities Board, City of
Dauphin Island Gathering Partners
Decatur Housing Authority
Decatur Utilities
DeKalb-Cherokee Counties Gas District
Deltacom, Inc.
Dickens Ferry Apartments, LTD
Dixie Electric Cooperative
Dixie Pipeline Company
Dora Utilities
DTE Biomass Energy, Inc.
Duke Energy Field Services, Inc.
e.spire Communications, Inc.
East Alabama Water District
East Central Gas District
East Cullman Water System
Edmond Estates
Elba Housing Authority
Energen Resources – Oak Grove
Energen Resources – Vance
Enterprise Housing Authority
Enterprise Products Operating L.P.
EOTT Energy Corporation
Eufaula Water Works & Sewer Board
Eutaw Housing Authority
Exxon Mobil Corporation
Fairhope Utilities Board
Falcon Cable of Mobile
Falkville, Town of
Farmers Telephone Co-Op, Inc.
Fayette Gas Board
Fayette Housing Authority
Flomaton, Town of
Floralia Gas Department
Florence, City of
Florence Housing Authority
Florida Gas Transmission Company
Freemanville Water System, Inc.
Frontier Communications of Alabama
Frontier Communications of Lamar Co.
Frontier Communications of the South
Frontier Communications International, Inc.

Fultondale Gas Board
Genesis Crude Oil, L.P.
Geneva County Gas District
Georgiana Housing Authority
Gordo Housing Authority
Gordo, Town of
Graysville Utilities
Greater Gadsden Housing Authority
GTC, Inc.
GTE South, Inc.
Guin Housing Authority
Gulf Shores, Utilities Board of the City of
Gulf Telephone Company
Guntersville Housing Authority
Guntersville Water Board
Haleyville Housing Authority
Hamilton Housing Authority
Hanceville Housing Authority
Hartselle Utilities Board
Hayneville Telephone Company, Inc.
Headland Housing Authority
Holiday Village Mobile Home Park
Hoover, City of
Hunt Refining Company
Huntsville, City of
Huntsville Housing Authority
Huntsville Utilities, Electric, Gas and Water
ICG Telecom Group, Inc.
Intermedia Communications, Inc.
Interstate FiberNet
Interstate Telephone Company
Jacksonville Gas Water & Sewer Board
Jefferson County Housing Authority
Jemison Water Department
J N Exploration
Joe Wheeler EMC
KMC SouthEast Corporation
KMC Telecom III, Inc.
KNOLOGY of Montgomery
Koch Gateway Pipeline Company
Lafayette, City of
Lafayette Housing Authority
Lamar County Gas District
Lanett, City of
Lanett Housing Authority
Lawrence Colbert Counties Gas District
Lee Chambers Utilities District

ALABAMA ONE-CALL MEMBERSHIP LIST

Lemoine Water System, Inc.
Level 3 Communications
Lightwave Technologies, LLC
Lincoln, City of
Linde Gas, Inc.
Lineville Housing Authority
Livingston, City of Utility Board
Livingston Housing Authority
Loachapoka Water Authority
Loxley, Town of
Luverne Housing Authority
Madison, City of Public Works Department
Madison River Communications
Magnolia Pipeline Corporation
Mallard Cablevision
Maplesville Waterworks & Gas Board
Marshall County Gas District
MCI Telecommunications
Mediacom
Midcoast Interstate Transmission, Inc.
Midland City Housing Authority
Millport Housing Authority
Mobil Exploration & Producing U.S.
Mobile, City of
Mobile Area Water and Sewer Service
Mobile Gas Service
Montevallo Water Works
Moon-Hines-Tigrett
Moulton Gas Board, Town of
Moundville Telephone
Mount Vernon Water & Gas
Mulga, Town of
New Brockton Housing Authority
Newton Housing Authority
North Alabama Gas District
Northwest Alabama Gas District
Otelco Telephone, LLC
Otelco Telephone, LLC / Walnut Grove
Oneonta Utilities Board
Opelika Power and Light
Opelika Water Works
Opp Housing Authority
Orange Beach Water Authority
Palmer Petroleum, Inc.
Perdido Bay Water, Sewer & FPD
Phoenix Pipeline, LLC
Pickens County Natural Gas District
Piedmont Housing Authority
Piedmont Water, Gas & Sewer Board
Plains Marketing, LP
Plantation Pipeline Company
Praxair, Inc.
Qwest Communications
Red Bay Water and Gas
ResNet Communications
River Gas Corporation
Riviera Utilities
Roanoke, Utilities Board of the City of
Robertsdale, City of
Rockford Water & Gas
Royal Management Company
Russellville Gas Board
Russellville Housing Authority
Samson Resources Company
Saraland, City of
Scottsboro Housing Authority
Scottsboro Water, Sewer & Gas Board
Sellers Station Water System
Selma Housing Authority
Sheffield Housing Authority
Sheffield Utilities
Shell Chemical
Shell Western E&P, Inc.
Silverhill, Town of
Smiths Water and Sewer Authority
Sonat Intrastate-Alabama
South Alabama Sewer Service Corporation
South Alabama Utilities
South Eastern Electric Development
South Georgia Natural Gas Company
South of Dauphin Apartments
Southeast Alabama Gas District
Southern Gas Transmission Company
Southern Natural Gas
Spooner Petroleum Company
Spring Creek Apartments
Sprint
ST Services
Stevenson, Utilities Board of the Town of
Sulligent Housing Authority
Sumiton Gas Board
Summerdale, Town of
Sundown Apartments
Sylacauga Housing Authority

ALABAMA ONE-CALL MEMBERSHIP LIST

Sylacauga Utilities Board
Talladega College Hills Apartments
Talladega Housing Authority
Tallasse, City of
Tallasse Housing Authority
Tarrant Housing Authority
TCI of Alabama (Birmingham)
TCI of Lee County
TCI TKR of Alabama (Montgomery)
TCI TKR of the Gulf Plains
Tennessee Gas Pipeline Company
Texaco
Texas Eastern Transmission Corp.
Timber Ridge Apartments
Time Warner Cable (Eufaula & Wetumpka)
Torch Operating Company
Torrence Cablevision USA, Inc.
Townhouse Square Apartments
Transcontinental Pipeline
TransMontaigne Product Service - East
Trawick Construction Company, Inc.
Trussville Utilities
Turnerville Water and F.P.D.
Tuscaloosa, City of
Tuscumbia Gas Department
Tuscumbia Housing Authority
Union Springs Housing Authority
Union Springs Telephone Company
Union Springs Utilities
United Cities Gas Company
Unocal Corporation
U S Steel
U S Steel Mining Company, LLC
USG Pipeline Company
Valley Brook Apartments
Vernon Housing Authority
Village at Moody
Village Green Apartments
Vina Natural Gas
Wadley, Town of
Weatherly Cable, Inc.
Wedgewood Manor Apartments
Wedowee, Town of
West Jefferson Gas System
West Morgan – East Lawrence Water Authority
WFS-NGL Pipeline Co., Inc.
Wheeler Basin Natural Gas

Wilcox County Gas District
Williams Communications, Inc.
Wilton, Town of
Winfield Housing Authority
York, City of

TOTAL MEMBERSHIP 335
Dec 00

ASSOCIATE MEMBERS

UTILIQUEST

1442 S. Beltline Hwy
Mobile, AL 36693
Contact: Gary Gibson
(334) 661-7031

STS, INC.

2820 Fairlane Drive
Montgomery, AL 36116
Contact: Chuck Collins
(334) 271-3106

CENTRAL LOCATING SERVICE

512 Lorna Square
Birmingham, AL 35216
Contact: Todd Bullock
(205) 822-9540

AZED COMMUNICATIONS

1301 Azalea Road
Suite 55
Mobile, AL 36693
Contact: Joseph S. Gardiner
(334) 602-5632

PINPOINT LOCATING, INC.

402 Ridgecrest Trail
Oneonta, AL 35121
Contact: Steve Martin
(205) 625-5042

SUPPORTING MEMBERS

GEORGE COOP ASSOCIATES

788 Pinewood Lake Dr
Venice, FL 34292-3680
Contact: Karen Vernon
(205) 491-3131

PIPEHORN UTILITY TOOL COMPANY

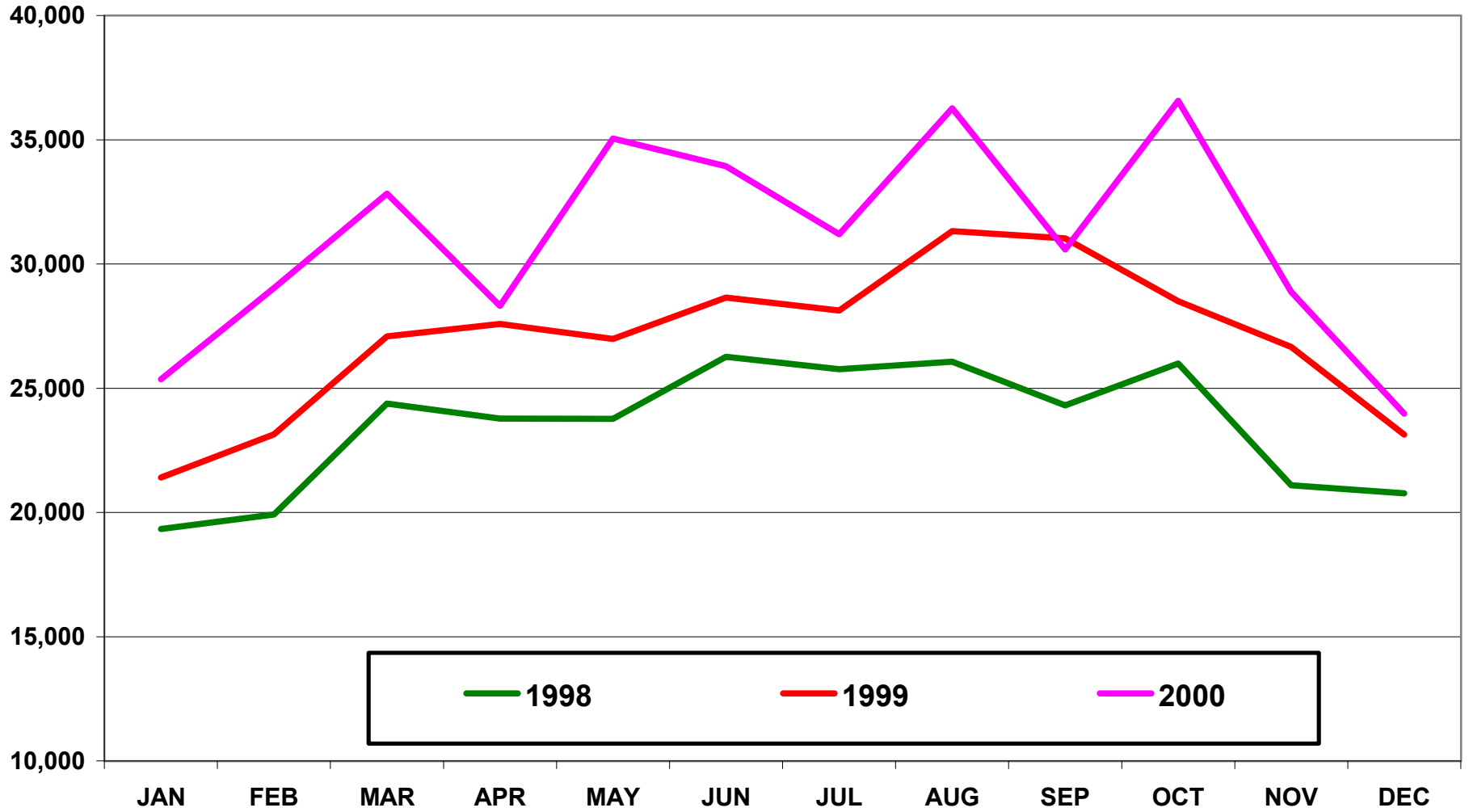
PO Box 100519
Birmingham, AL 35210
Contact: Donald Plosser
(205) 956-3710

Alabama One Call Historical Report of Call Volume 1998-2000

<u>MONTH</u>	<u>1998</u>	<u>INCR</u>	<u>%</u>	<u>MONTH</u>	<u>1999</u>	<u>INCR</u>	<u>%</u>	<u>MONTH</u>	<u>2000</u>	<u>INCR</u>	<u>%</u>
JAN	19,333	2,073	12%	JAN	21,400	2,067	11%	JAN	25,356	3,956	18%
FEB	19,913	1,588	9%	FEB	23,138	3,225	16%	FEB	29,029	5,891	25%
MAR	24,381	2,182	10%	MAR	27,082	2,701	11%	MAR	32,833	5,751	21%
APR	23,779	(401)	-2%	APR	27,584	3,805	16%	APR	28,319	735	3%
MAY	23,767	1,921	9%	MAY	26,986	3,219	14%	MAY	35,050	8,064	30%
JUN	26,266	5,437	26%	JUN	28,650	2,384	9%	JUN	33,936	5,286	18%
JUL	25,769	2,430	10%	JUL	28,128	2,359	9%	JUL	31,193	3,065	11%
AUG	26,068	3,130	14%	AUG	31,318	5,250	20%	AUG	36,262	4,944	16%
SEP	24,310	91	0%	SEP	31,033	6,723	28%	SEP	30,585	(448)	-1%
OCT	25,997	1,460	6%	OCT	28,498	2,501	10%	OCT	36,568	8,070	28%
NOV	21,096	2,669	14%	NOV	26,660	5,564	26%	NOV	28,874	2,214	8%
DEC	<u>20,767</u>	<u>1,445</u>	<u>7%</u>	DEC	<u>23,137</u>	<u>2,370</u>	<u>11%</u>	DEC	<u>23,975</u>	<u>838</u>	<u>4%</u>
Total	281,446	24,025	9%	Total	323,614	42,168	15%	Total	371,980	48,366	15%



Ticket Volume Alabama One Call



**EXCAVATOR LOCATE REQUESTS WITH
LESS THAN 48 HOUR NOTICE
2000**

MONTH	LOCATE REQUESTS
January	2,285
February	3,422
March	3,095
April	2,850
May	3,494
June	3,230
July	3,293
August	3,798
September	3,449
October	2,941
November	2,853 *
December	2,854 *
TOTAL	37,564

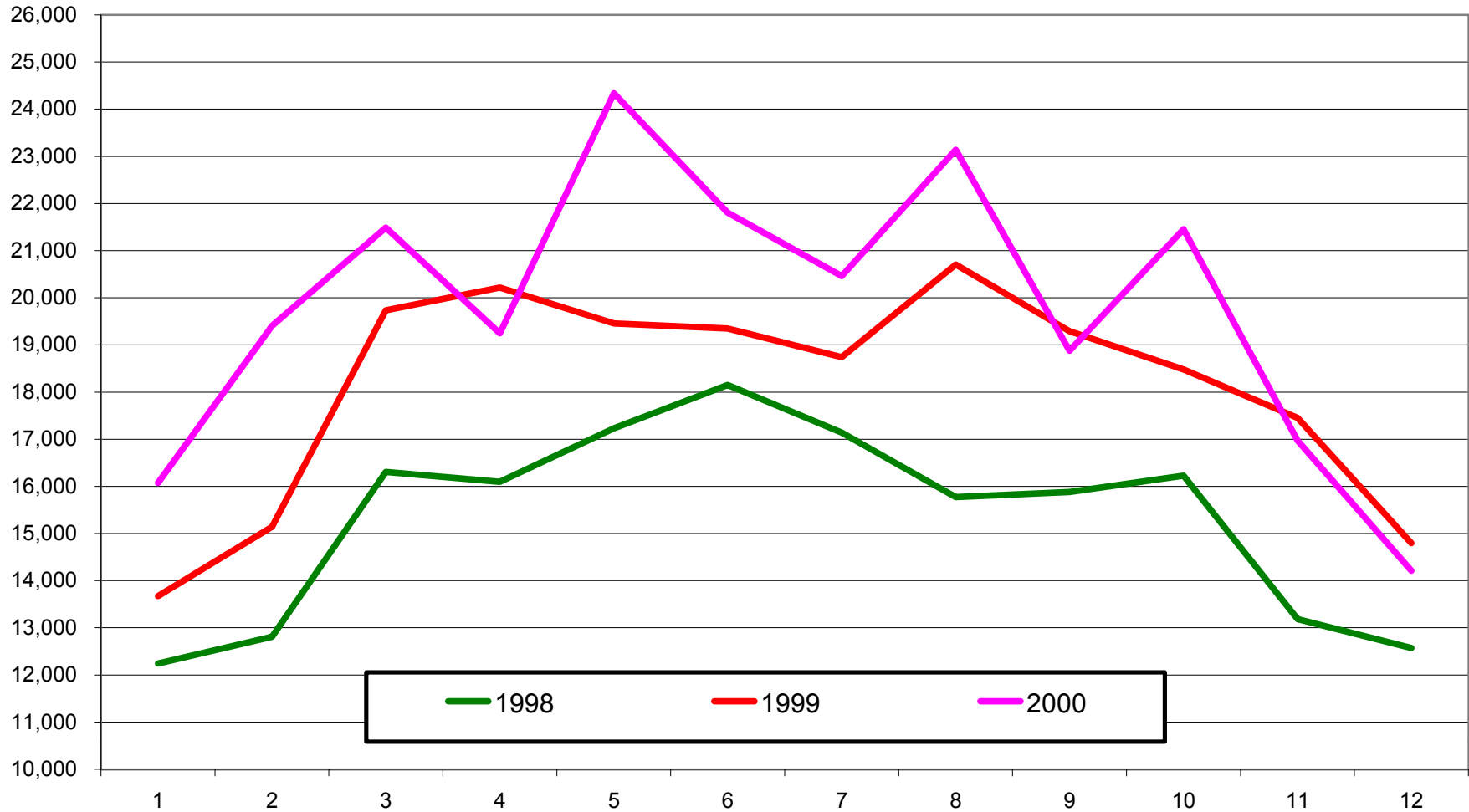
* Averaged from January and February totals. Actual totals for November and December were not available.

**Alabama One Call
Historical Report of Call Volume
1998-2000**

MONTH	1998	INCR.	%	1999	INCR.	%	2000	INCR.	%
Jan	12,241	53	0%	13,675	1,434	12%	16,074	2,399	18%
Feb	12,812	(729)	-5%	15,142	2,330	18%	19,404	4,262	28%
Mar	16,307	(878)	-5%	19,732	3,425	21%	21,485	1,753	9%
Apr	16,093	(1,962)	-11%	20,216	4,123	26%	19,244	(972)	-5%
May	17,233	28	0%	19,457	2,224	13%	24,339	4,882	25%
Jun	18,151	3,368	23%	19,350	1,199	7%	21,804	2,454	13%
Jul	17,138	(2,669)	-13%	18,738	1,600	9%	20,460	1,722	9%
Aug	15,773	(2,455)	-13%	20,705	4,932	31%	23,138	2,433	12%
Sep	15,881	(148)	-1%	19,291	3,410	21%	18,878	(413)	-2%
Oct	16,227	629	4%	18,482	2,255	14%	21,454	2,972	16%
Nov	13,185	1,750	15%	17,451	4,266	32%	16,968	(483)	-3%
Dec	12,573	932	8%	14,795	2,222	18%	14,210	(585)	-4%
Total	183,614	(2,081)	-1%	217,034	33,420	18%	237,458	20,424	9%



ACD Call Volume Alabama One Call



**ALABAMA ONE CALL
MEMBER TRANSMISSIONS 2000**

MEMBER	JAN	FEB	MAR	APR	MAY	JUN	JUL	AUG	SEPT	OCT	NOV	DEC	TOTAL
A T & T	5,852	6,875	7,683	6,721	8,420	8,359	7,313	8,625	7,031	8,390	7,003	6,537	88,809
A T & T LOCAL SERVICES	161	152	138	132	140	203	163	199	129	219	193	215	2,044
AIR PRODUCTS & CHEMICALS	56	122	111	117	117	116	109	84	76	85	110	95	1,198
ALABAMA GAS													
ANNISTON	413	458	486	438	658	611	560	628	532	825	467	417	6,493
BESSEMER	1,023	1,219	1,258	1,227	1,558	1,614	1,181	1,484	1,218	1,368	1,032	1,108	15,290
BIRMINGHAM	2,301	2,680	2,824	2,428	3,193	3,561	2,993	3,194	2,612	3,147	2,444	2,275	33,652
GADSDEN	303	337	320	299	435	451	527	587	390	477	297	258	4,681
JASPER	227	268	232	205	251	244	236	221	237	231	167	164	2,683
LEEDS	468	474	540	452	544	484	445	520	423	499	396	395	5,640
MARION	229	282	273	262	283	266	250	314	242	279	212	231	3,123
MONTGOMERY	2,186	2,390	2,846	2,527	3,041	2,945	2,389	2,746	2,415	2,624	2,145	1,701	29,955
OPELIKA	759	1,029	1,103	803	986	841	1,095	967	813	949	719	524	10,588
PHENIX CITY	385	509	480	422	586	480	768	503	366	527	346	306	5,678
ROGERSVILLE	311	341	431	346	476	490	464	498	418	482	390	358	5,005
SELMA	127	154	186	166	119	139	138	155	131	155	119	112	1,701
SHELBY	4,265	4,717	5,527	4,815	5,973	6,221	5,215	6,199	5,017	5,293	4,209	4,088	61,539
TALLADEGA	379	363	408	338	414	426	384	389	333	430	364	336	4,564
TUSCALOOSA	1,406	1,601	1,757	1,373	1,781	1,578	1,499	1,827	1,385	1,382	1,372	1,096	18,057
TUSKEGEE	186	205	242	168	259	194	282	248	214	347	278	134	2,757
ALABAMA POWER													
BIRMINGHAM DIV.	9,470	10,714	12,285	10,606	13,163	13,801	11,688	13,385	10,925	11,928	9,387	8,856	136,208
EASTERN DIV.	2,550	2,864	3,154	2,796	3,756	3,471	3,566	3,776	3,130	3,833	3,005	2,430	38,331
SOUTHERN DIV.	3,567	4,096	4,742	4,041	4,804	4,506	4,248	4,525	3,952	4,327	3,526	2,688	49,022
WESTERN DIV.	2,954	3,256	3,490	2,969	3,686	3,529	3,232	3,868	3,100	3,227	2,733	2,220	38,264
MOBILE DIV.	2,905	2,482	3,796	3,516	4,020	3,838	3,628	4,618	4,009	4,052	3,127	2,960	42,951
SOUTHEAST DIV.	1,201	1,453	1,552	1,390	1,639	1,580	1,560	1,673	1,374	1,574	1,338	1,054	17,388
ALABASTER WATER BOARD	381	421	769	451	648	681	629	704	445	573	430	375	6,507
ALATENN PIPELINE COMPANY											7	2	9
ALBERTVILLE HOUSING AUTHORITY	6	12	13	14	16	23	30	31	28	34	23	27	257
ALEXANDER CITY, CITY OF	109	82	101	94	129	94	130	117	108	145	122	93	1,324
ALEXANDER CITY HOUSING AUTHORITY	29	9	14	10	8	9	28	14	22	33	32	17	225
ALICEVILLE HOUSING AUTHORITY	5	5	8	9	11	7	2	1	3	1	4	1	57
ALLTEL 01	415	424	444	409	533	434	428	593	461	437	332	379	5,289
ALLTEL 02	90	131	116	92	109	95	183	106	109	156	112	85	1,384
ALTA VISTA MANOR APARTMENTS	35	41	48	47	63	52	40	39	47	52	37	34	535
AMERICAN METROCOMM CORP.	189	174	190	207	230	204	138	225	163	204	172	163	2,259
AMOCO PIPELINE	80	107	116	116	133	135	132	151	115	150	168	134	1,537
ANNISTON WATER WORKS AND SEWER BOARD	280	304	316	253	414	402	326	370	322	596	269	276	4,128
ARAB HOUSING AUTHORITY	1	1	1	0	0	0	0	1	2	3	0	3	12
ASHTON PLACE APARTMENTS	2	6	22	3	6	5	6	3	3	12	30	21	119
ATHENS, CITY OF	558	846	1,015	740	712	684	617	641	584	608	418	326	7,749
ATHENS HOUSING AUTHORITY	60	54	45	50	58	46	46	39	53	63	51	31	596
ATMORE, CITY OF	50	70	81	63	84	114	74	89	76	80	72	53	906
ATTALLA HOUSING AUTHORITY	4	4	6	8	7	10	12	10	7	12	9	23	112
AUBURN WATER WORKS	424	496	681	567	690	553	792	664	509	646	405	278	6,705
AZED COMMUNICATIONS	48	244	244	292	341	393	300	352	308	384	317	455	3,678
BAKERHILL WATER AUTHORITY	10	24	54	40	39	29	37	42	31	48	39	55	448

**ALABAMA ONE CALL
MEMBER TRANSMISSIONS 2000**

MEMBER	JAN	FEB	MAR	APR	MAY	JUN	JUL	AUG	SEPT	OCT	NOV	DEC	TOTAL
BALDWIN COUNTY CABLE	40	51	39	33	45	46	34	60	42	82	63	33	568
BALDWIN COUNTY EMC	698	844	806	847	1,028	1,011	963	1,054	956	1,011	800	715	10,733
BALDWIN COUNTY SEWER SERVICE, LLC												234	234
BAY GAS STORAGE COMPANY, LTD.	30	33	47	39	39	36	29	27	27	39	43	30	419
BAY MINETTE UTILITIES BOARD	77	79	141	159	186	128	126	176	118	132	82	90	1,494
BAYOU LA BATRE UTILITIES	77	90	107	98	110	101	100	111	86	92	79	88	1,139
BELLSOUTH TELECOMMUNICATIONS													
BIRMINGHAM 01	8,173	9,281	10,915	9,094	11,376	12,141	10,230	11,758	9,386	11,048	7,910	2,926	114,238
BIRMINGHAM 05	305	283	372	347	351	457	412	535	413	418	379	404	4,676
DECATUR 01	5,859	6,645	7,887	6,338	8,464	7,935	7,394	8,922	7,566	7,833	6,309	5,243	86,395
MOBILE	3,242	3,910	4,170	4,074	4,694	4,350	3,984	5,006	4,193	5,970	3,467	3,128	50,188
MONTGOMERY 01	4,877	5,676	6,439	5,600	6,596	6,292	5,960	6,355	5,574	5,923	4,882	3,755	67,929
MONTGOMERY 02	2,140	2,499	2,822	2,198	2,838	2,587	2,588	2,916	2,375	2,462	2,201	1,743	29,369
PENSACOLA	1	5	3	0	2	1	2	2	6	8	11	12	53
BERRY GAS BOARD	23	20	19	23	29	31	28	31	15	23	23	13	278
BERRY HOUSING AUTHORITY	4	2	4	1	7	6	5	8	2	4	2	1	46
BIRMINGHAM CABLE	2,371	2,898	2,883	2,558	3,329	3,747	3,085	3,317	2,736	3,407	2,466	2,284	35,081
BIRMINGHAM WTR WORKS & SWR BRD	5,715	6,277	7,023	6,103	7,508	8,050	6,784	7,551	6,066	7,977	5,549	5,417	80,020
BISHOP PETROLEUM	16	12	16	16	28	24	25	24	24	10	25	20	240
BLACK BOX NETWORK SVCS, INC. - GOVERNMENTAL SO	43	170	185	206	227	200	135	222	162	191	169	151	2,061
BLACK WARRIOR METHANE CORP.	9	8	12	16	17	12	11	31	11	18	89	16	250
BLOUNTSVILLE HOUSING AUTHORITY	3	7	1	1	4	0	10	12	2	6	8	9	63
BOAZ GAS BOARD	64	75	112	91	139	102	107	107	88	118	89	77	1,169
BOAZ WATER AND SEWER BOARD	33	38	77	62	93	59	59	52	52	74	47	42	688
BONNIE DOONE APARTMENTS	0	2	0	1	0	1	2	4	0	5	6	3	24
BOSTON, HOUSING AUTHORITY OF	0	3	2	4	4	1	0	1	1	2	1	2	21
BRENT HOUSING AUTHORITY	0	0	0	0	0	0	0	0	0	0	0	0	0
BREWTON, CITY OF	88	92	127	119	142	146	144	149	170	234	133	132	1,676
BRIDGEPORT UTILITIES	12	6	13	9	14	20	27	36	26	32	20	5	220
BRINDLEE MOUNTAIN TELEPHONE CO.	12	19	26	18	29	35	39	64	63	91	46	37	479
BROOKSIDE, TOWN OF	13	21	29	27	25	20	36	23	29	20	41	18	302
BROOKVIEW APARTMENTS	11	19	12	5	10	10	8	10	19	25	14	0	143
BUTLER, TOWN OF UTILITIES BOARD	2	2	6	8	3	4	2	5	3	0	3	1	39
BYERS ENGINEERING 04	3,958	4,723	4,963	4,722	5,650	5,289	4,963	5,896	5,007	5,527	4,176	3,868	58,742
CABLE ALABAMA	1,440	1,471	2,170	1,381	2,043	2,189	1,989	2,500	2,021	2,129	1,609	1,521	22,463
CABLE ONE	214	235	247	246	345	347	281	363	295	519	239	220	3,551
CALERA & MONTEVALLO HOUSING AUTHORITY	31	45	42	37	50	38	47	39	61	42	47	36	515
CALERA WATER & GAS BOARD	163	144	655	221	368	217	264	257	180	259	217	165	3,110
CALLON OFFSHORE PRODUCTION, INC.	34	26	31	41	51	27	28	35	17	12	22	18	342
CAMP HILL, TOWN OF	1	13	4	11	14	9	16	14	13	15	11	5	126
CANOE WATER AND FIRE PROTECTION AUTHORITY										22	30	23	75
CARBON HILL HOUSING AUTHORITY	0	0	0	0	1	0	0	0	3	1	0	0	5
CARBON HILL UTILITIES BOARD	11	10	18	13	24	14	11	28	6	37	21	12	205
CARROLL'S CREEK WATER AUTHORITY	208	298	253	178	322	271	258	339	241	226	259	220	3,073
CARROLLTON HOUSING AUTHORITY	1	1	2	3	0	0	5	1	0	0	0	1	14
CENTRAL AL ELECTRIC CO-OP 01	213	272	336	253	384	403	375	379	371	352	306	242	3,886
CENTRAL AL ELECTRIC CO-OP 02	134	174	207	176	198	183	172	216	213	243	204	148	2,268
CENTRAL AL ELECTRIC CO-OP 03	64	86	87	90	121	108	100	107	101	112	121	96	1,193
CENTRAL AL ELECTRIC CO-OP 04	388	411	423	373	442	451	407	491	424	514	387	347	5,058

**ALABAMA ONE CALL
MEMBER TRANSMISSIONS 2000**

MEMBER	JAN	FEB	MAR	APR	MAY	JUN	JUL	AUG	SEPT	OCT	NOV	DEC	TOTAL
CHARTER CABLE TV - ATHENS						237	398	442	398	435	398	370	2,678
CHARTER CABLE TV - DECATUR	1,089	1,487	1,749	1,433	1,780	978	586	605	470	575	623	401	11,776
CHARTER COMMUNICATIONS - ALEX	115	126	142	135	159	132	228	163	169	271	234	107	1,981
CHARTER COMMUNICATIONS - BIRMINGHAM	3,877	3,969	4,603	4,237	5,188	5,191	4,550	5,387	5,203	6,271	4,943	4,859	58,278
CHARTER COMMUNICATIONS - HARTSELLE	197	193	178	217	195	160	166	255	220	209	306	169	2,465
CHARTER COMMUNICATIONS - LANETT		52	48	43	54	59	55	47	53	65	65	47	588
CHARTER COMMUNICATIONS - TUSC.	365	406	483	389	541	461	386	537	386	421	532	500	5,407
CHEROKEE MANOR APARTMENTS	0	0	0	0	0	0	0	0	0	2	1	3	6
CHEROKEE WATER AND GAS DEPARTMENT	11	2	4	11	14	9	16	14	9	10	11	5	116
CHEVRON U.S.A. INC.	2	5	1	3	4	2	4	5	7	2	5	4	44
CHILDERSBURG WTR, SWR, & GAS BD	95	113	131	94	163	124	140	147	129	140	130	143	1,549
CHILTON WATER AUTHORITY	192	233	301	250	330	312	285	305	277	313	236	187	3,221
CLARKE-MOBILE COUNTIES GAS DISTRICT	357	454	436	440	530	511	553	607	608	575	418	422	5,911
CLAYTON HOUSING AUTHORITY	1	0	0	2	1	0	0	1	2	0	3	1	11
COGASCO, INC.	4	7	2	11	11	9	20	15	15	15	14	5	128
COLONIAL PIPELINE	820	935	1,039	1,182	1,297	1,215	1,012	1,191	902	1,129	1,033	1,018	12,773
COLONY APARTMENTS	35	72	106	92	117	112	80	85	70	82	91	64	1,006
COLUMBIA SQUARE APARTMENTS	9	6	3	4	11	7	5	12	8	4	9	1	79
COLUMBIANA GAS	67	89	370	128	166	142	128	145	117	146	126	135	1,759
COLUMBIANA HOUSING AUTHORITY	80	94	122	108	130	146	101	102	118	143	109	63	1,316
COMCAST CABLEVISION OF GADSDEN	242	262	230	227	312	315	302	400	244	302	203	192	3,231
COMCAST CABLE-HUNTSVILLE	722	780	1,078	752	1,188	1,242	1,090	1,571	1,248	1,913	1,048	1,028	13,660
COMCAST CABLE-MOBILE	1,293	1,629	1,681	1,715	2,372	1,830	1,725	2,150	1,739	1,471	1,531	1,559	20,695
COMCAST CABLEVISION OF THE SHOALS	811	773	921	826	1,042	906	900	1,062	872	940	801	659	10,513
COMCAST CABLE-TUSC.	940	1,160	1,282	1,005	1,284	1,169	1,100	1,371	987	1,080	904	867	13,149
COM-LINK, INC.	135	180	164	183	210	176	272	189	181	256	182	139	2,267
CONECUH-MONROE COUNTIES GAS DISTRICT	180	189	243	217	274	221	216	279	259	394	220	227	2,919
CORDOVA HOUSING AUTHORITY	0	0	0	0	1	8	18	2	0	1	1	0	31
CORDOVA WATER AND GAS	16	23	6	10	8	22	57	24	11	5	7	6	195
COTTONWOOD HOUSING AUTHORITY	0	0	0	0	0	2	1	0	0	0	3	0	6
COWETA APARTMENTS	18	26	20	27	27	24	15	18	23	36	22	30	286
CULLMAN-JEFFERSON	635	754	697	531	824	837	701	858	746	958	725	648	8,914
CULLMAN HOUSING AUTHORITY	112	127	97	79	111	106	103	116	109	111	114	95	1,280
CULLMAN WATER	255	294	229	185	260	241	231	235	238	283	238	212	2,901
DADEVILLE HOUSING AUTHORITY	0	9	12	10	11	18	48	12	7	23	9	6	165
DADEVILLE WATER SUPPLY & GAS BD	48	68	84	54	74	75	181	84	87	128	76	45	1,004
DAPHNE, CITY OF	336	440	422	389	542	422	343	419	410	433	350	334	4,840
DAUPHIN ISLAND GATHERING	3	2	3	4	5	1	3	3	1	3	3	2	33
DECATUR HOUSING AUTHORITY	41	99	76	79	116	85	61	68	69	70	79	41	884
DECATUR UTILITIES	431	702	616	690	939	648	618	638	486	603	667	458	7,496
DeKALB-CHEROKEE CO.	76	87	127	128	126	162	170	213	105	205	126	145	1,670
DELTACOM	244	322	426	281	407	524	1,416	3,160	2,785	3,501	2,701	2,671	18,438
DICKENS FERRY APARTMENTS, LTD	25	38	64	42	48	41	35	71	38	69	92	102	665
DIXIE ELECTRIC COOPERATIVE	809	835	1,014	1,017	1,076	1,038	864	1,015	818	976	843	658	10,963
DIXIE PIPELINE-01	421	454	601	497	672	617	818	658	533	684	539	423	6,917
DIXIE PIPELINE-02	35	46	48	53	46	72	58	51	60	65	77	64	675
DORA UTILITIES	23	17	15	15	16	17	50	75	84	53	22	16	403
DTE BIOMASS ENERGY, INC.	124	127	223	174	202	211	153	136	105	185	145	129	1,914
DUKE ENERGY FIELD SERVICES	35	44	69	61	61	54	49	50	58	99	100	75	755

**ALABAMA ONE CALL
MEMBER TRANSMISSIONS 2000**

MEMBER	JAN	FEB	MAR	APR	MAY	JUN	JUL	AUG	SEPT	OCT	NOV	DEC	TOTAL
e.spire COMMUNICATIONS, INC. 01	417	380	513	487	563	512	432	504	434	513	474	451	5,680
e.spire COMMUNICATIONS, INC. 02	608	721	778	656	820	994	789	813	609	801	706	715	9,010
e.spire COMMUNICATIONS, INC. 03	246	246	245	296	344	397	301	361	319	370	317	450	3,892
EAST ALABAMA WATER DISTRICT	100	146	138	90	115	121	130	141	143	166	144	85	1,519
EAST CENTRAL GAS	54	62	66	49	66	57	47	58	75	127	65	39	765
EAST CULLMAN WATER SYSTEM, INC.	76	103	79	82	119	118	105	120	138	177	151	118	1,386
EDMOND ESTATES	15	41	21	30	22	22	33	17	26	30	9	20	286
ELBA HOUSING AUTHORITY	10	12	7	12	14	11	1	5	6	6	5	2	91
ENERGEN RESOURCES - OAK GROVE	63	86	107	75	125	100	105	126	130	136	153	140	1,346
ENERGEN RESOURCES - VANCE	280	247	352	279	332	290	285	350	271	352	471	332	3,841
ENTERPRISE HOUSING AUTHORITY	0	3	1	2	2	1	2	3	5	2	5	2	28
ENTERPRISE PRODUCTS OPERATING L.P.	93	122	130	133	166	134	123	166	147	129	115	119	1,577
EOTT ENERGY CORPORATION	271	298	268	232	364	294	239	439	327	359	414	329	3,834
ERCON OIL PUCHASING, INC.	3	7	4	4	4	4	7	5	12	8	3	5	66
EUFAULA WATER WORKS & SEWER BD	70	83	111	122	99	90	102	103	111	101	77	99	1,168
EUTAW HOUSING AUTHORITY				1	2	2	2	6	11	8	25	12	69
EXXON COMPANY, U.S.A.	31	34	29	32	41	42	38	53	49	40	56	44	489
FAIRHOPE UTILITIES	653	772	761	766	980	842	727	898	778	807	662	554	9,200
FALCON CABLE OF MOBILE	245	288	273	221	264	268	229	364	254	349	268	239	3,262
FALKVILLE, TOWN OF	18	33	11	21	21	28	33	35	27	29	20	26	302
FARMERS TELEPHONE CO-OP, INC.	10	26	37	51	28	34	35	74	81	142	39	37	594
FAYETTE GAS	23	19	41	39	23	24	25	27	35	80	59	47	442
FAYETTE HOUSING AUTHORITY	8	3	13	9	2	5	5	5	6	15	14	26	111
FLOMATON, TOWN OF	28	29	29	30	48	38	29	33	30	32	35	30	391
FLORALA GAS DEPARTMENT	3	3	0	2	0	9	1	4	2	3	3	2	32
FLORIDA GAS 01	37	46	47	38	45	47	39	34	39	58	43	40	513
FLORIDA GAS 02	35	56	53	56	68	73	55	62	70	53	51	44	676
FLORENCE HOUSING AUTHORITY	146	99	101	79	133	107	95	102	77	105	99	101	1,244
FLORENCE ELECTRICITY DEPARTMENT	752	759	908	752	1,038	922	875	1,018	817	859	746	679	10,125
FLORENCE WATER & SEWER DPT	566	522	617	550	736	682	676	712	553	641	558	453	7,266
FLORENCE STORM SEWER DEPARTMENT	435	442	490	455	585	559	536	565	431	499	472	379	5,848
FLORENCE NATURAL GAS DEPARTMENT	576	529	638	587	768	660	683	745	543	598	542	451	7,320
FREEMANVILLE WATER SYSTEM, INC.											17	16	33
FRONTIER COMMUNICATIONS INTERNATIONAL, INC.					82	181	209	273	217	396	352	490	2,200
FRONTIER COMMUNICATIONS OF ALABAMA	94	99	107	90	115	72	70	116	86	141	74	102	1,166
FRONTIER COMMUNICATIONS OF LAMAR CO	6	10	12	12	18	14	7	19	12	34	26	34	204
FRONTIER COMMUNICATIONS OF THE SOUTH	65	288	114	90	127	166	105	115	115	118	102	79	1,484
FULTONDALE GAS	323	298	256	299	277	252	320	298	258	204	167	159	3,111
GENESIS CRUDE OIL, L.P.	160	212	145	156	209	201	146	230	160	224	313	324	2,480
GENEVA COUNTY GAS DISTRICT	14	21	27	28	38	37	40	55	47	65	58	36	466
GEORGIANA HOUSING AUTHORITY	0	1	1	2	3	0	1	2	1	2	3	2	18
GORDO HOUSING AUTHORITY	0	6	3	1	1	0	2	0	4	1	4	2	24
GORDO, TOWN OF	6	14	22	24	15	12	15	14	16	17	26	8	189
GRAYSVILLE UTILITIES	175	151	156	154	156	153	140	132	132	138	104	90	1,681
GREATER GADSDEN HOUSING AUTHORITY	71	89	49	68	69	64	71	77	40	58	48	49	753
GTC, INC.	7	2	5	3	4	12	2	5	4	6	8	11	69
GTE SOUTH, INC.	2,736	3,067	3,366	3,097	3,924	3,509	3,239	4,005	3,199	3,993	3,119	2,785	40,039
GUIN HOUSING AUTHORITY	1	2	4	1	6	3	3	4	4	3	2	5	38
GULF SHORES, UTILITIES BOARD OF THE CITY OF	82	101	94	91	120	180	183	130	148	151	110	139	1,529

**ALABAMA ONE CALL
MEMBER TRANSMISSIONS 2000**

MEMBER	JAN	FEB	MAR	APR	MAY	JUN	JUL	AUG	SEPT	OCT	NOV	DEC	TOTAL
GULF TELEPHONE CO.	888	952	880	1,035	1,269	1,293	1,186	1,350	1,213	1,221	1,050	1,132	13,469
GUNTERSVILLE HOUSING AUTHORITY	1	11	4	1	6	3	12	10	14	9	10	11	92
GUNTERSVILLE WATER BOARD			44	53	50	63	55	36	64	61	72	67	565
HACKLEBURG HOUSING AUTHORITY	4	5	6	4	5	10	5	9	8	8	4	4	72
HALEYVILLE HOUSING AUTHORITY	8	1	10	9	7	6	8	2	5	7	8	4	75
HAMILTON, HOUSING AUTHORITY OF	7	7	15	6	12	13	3	9	7	9	15	10	113
HANCEVILLE HOUSING AUTHORITY	16	12	16	10	14	23	13	19	20	20	18	17	198
HARTSELLE UTILITIES	214	218	212	247	237	183	178	239	215	193	187	166	2,489
HAYNEVILLE TELPHONE COMPANY, INC.	179	157	194	199	230	205	134	220	162	209	196	139	2,224
HEADLAND HOUSING AUTHORITY	2	1	4	4	3	2	7	7	8	1	5	0	44
HEFLIN HOUSING AUTHORITY	6	6	8	9	9	12	12	13	12	13			100
HOLIDAY VILLAGE MOBILE HOME PARK	2	0	0	0	0	0	1	4	0	3	0	0	10
HOOVER, CITY OF	67	122	112	75	93	154	90	127	94	97	120	89	1,240
HUNT REFINING CO.	237	271	355	305	333	339	246	333	242	300	295	246	3,502
HUNTSVILLE, CITY OF - LANDSCAPE MANAGEMENT										275	307	282	864
HUNTSVILLE, CITY OF - TRAFFIC OPERATIONS			1,634	1,098	1,687	1,774	1,565	2,154	1,697	413			12,022
HUNTSVILLE HOUSING AUTHORITY	87	119	125	99	126	145	120	195	119	221	181	213	1,750
ICG TELECOM GROUP, INC.	826	937	985	866	1,047	1,230	939	1,131	845	1,163	947	1,017	11,933
INTERMEDIA COMMUNICATIONS	424	519	592	372	555	597	524	824	548	646	627	596	6,824
INTERSTATE FIBERNET	1,588	1,777	2,041	1,940	2,654	2,548	2,161	3,159	2,785	3,505	2,700	2,675	29,533
INTERSTATE TELEPHONE COMPANY	91	119	119	95	109	108	116	113	108	112	134	74	1,298
JACKSONVILLE GAS	55	62	58	59	90	74	76	110	64	69	61	50	828
JEFFERSON COUNTY HOUSING AUTHORITY	55	65	58	26	72	25	21	37	32	40	30	21	482
JEMISON WATER DEPARTMENT	21	25	48	40	31	95	70	45	40	40	31	29	515
JN EXPLORATION & PRODUCTION	6	8	11	6	11	9	5	14	6	13	12	16	117
JOE WHEELER EMC	589	710	669	696	873	671	640	826	731	742	834	558	8,539
KMC TELECOM	454	513	613	385	586	620	546	810	585	655	652	609	7,028
KMC TELECOM III, INC.	254	323	425	360	441	378	272	405	302	345	302	281	4,088
KNOLGY OF MONTGOMERY	1,932	2,091	2,665	2,272	2,813	2,761	2,297	2,508	2,209	2,496	2,008	1,552	27,604
KOCH GATEWAY PIPELINE 01	525	677	628	546	750	615	512	822	547	699	732	643	7,696
KOCH GATEWAY PIPELINE 02	56	65	60	77	97	86	91	110	113	159	108	103	1,125
LAFAYETTE GAS	16	25	25	14	23	25	19	20	17	20	17	32	253
LAFAYETTE HOUSING AUTHORITY	4	18	11	5	6	10	13	12	13	9	7	21	129
LAMAR COUNTY GAS	61	57	73	83	91	74	58	87	65	80	78	39	846
LANETT, CITY OF	27	24	29	4	9	26	23	27	17	26	29	24	265
LANETT HOUSING AUTHORITY	9	8	5	18	31	11	4	2	5	7	11	14	125
LAWRENCE COLBERT COUNTIES GAS DISTRICT	82	90	91	59	125	90	62	103	74	57	84	42	959
LEMOYNE WATER SYSTEM, INC.	52	41	73	57	72	51	76	98	92	79	88	57	836
LEVEL 3 COMMUNICATIONS	654	517	474	451	553	588	590	1,754	1,296	1,532	1,463	1,768	11,640
LIGHTWAVE TECHNOLOGIES, L.L.C.	17	18	15	13	22	21	22	32	25	246	219	28	678
LIGHTWAVE TECHNOLOGIES, L.L.C. 02	136	135	215	218	230	222	165	214	182	234	167	120	2,238
LIGHTWAVE TECHNOLOGIES, L.L.C. 03											280	387	667
LINCOLN, CITY OF					92	72	74	91	94	98	101	88	710
LINDE GAS, INC.	77	161	138	153	156	133	127	95	96	115	148	112	1,511
LINEVILLE HOUSING AUTHORITY	10	6	8	8	15	12	3	9	14	8	11	13	117
LIVINGSTON, CITY OF UTILITY BOARD	23	28	32	53	43	39	33	31	20	34	29	48	413
LIVINGSTON HOUSING AUTHORITY	6	3	4	26	10	1	3	3	1	6	15	15	93
LOCAHAPOKA WATER AUTHORITY	126	133	239	177	170	182	152	235	177	201	207	141	2,140
LOXLEY, TOWN OF	55	53	59	55	62	49	56	66	56	47	39	38	635

**ALABAMA ONE CALL
MEMBER TRANSMISSIONS 2000**

MEMBER	JAN	FEB	MAR	APR	MAY	JUN	JUL	AUG	SEPT	OCT	NOV	DEC	TOTAL
LUVERNE HOUSING AUTHORITY	2	3	1	0	0	2	1	3	1	5	3	1	22
MADISON, CITY OF PUBLIC WORKS DEPARTMENT										367	253	171	791
MADISON RIVER COMMUNICATIONS								415	388	417	333	491	2,044
MAGNOLIA PIPELINE (01)	125	135	166	188	206	179	143	205	145	192	263	213	2,160
MAGNOLIA PIPELINE (02)	25	24	41	39	41	27	36	33	39	65	57	65	492
MALLARD CABLEVISION, LLC	142	126	142	147	172	183	243	296	237	248	218	178	2,332
MAPLESVILLE WATERWORKS & GAS	26	36	33	26	19	29	20	28	23	31	24	22	317
MARSHALL COUNTY GAS	326	347	424	386	500	522	495	606	480	614	439	450	5,589
MEDIACOM	1,397	1,953	1,569	1,549	2,196	2,111	1,683	2,115	1,765	4,950	1,497	1,156	23,941
MEDIACOM 02											411	426	837
MEDIACOM 03											36	253	289
MCI TELECOM	3,398	3,897	4,125	3,849	4,611	4,611	4,144	4,757	3,746	2,309	3,846	3,740	47,033
MIDCOAST INTERSTATE TRANSMISSION, INC.	773	1,003	1,078	881	1,232	1,120	989	1,228	931	1,034	1,089	909	12,267
MIDCOAST INTERSTATE TRANSMISSION, INC. 02											4	6	10
MIDLAND CITY HOUSING AUTHORITY	3	2	1	4	1	3	6	0	0	0	1	3	24
MILLPORT HOUSING AUTHORITY	1	0	0	1	2	2	0	0	0	2	1	2	11
MOBIL EXPLORATION	7	8	4	2	7	1	6	13	5	5	11	5	74
MOBILE, CITY OF 01									1,016	1,494	1,105	1,259	4,874
MOBILE, CITY OF 02									1,260	1,805	1,341	1,422	5,828
MOBILE GAS	2,107	2,563	2,766	2,579	2,899	2,818	2,618	3,372	2,741	3,057	2,411	2,335	32,266
MOBILE WATER & SEWER	1,486	1,880	1,943	1,896	2,206	2,106	1,993	2,440	1,976	2,379	1,738	1,739	23,782
MONTEVALLO WATER	65	116	96	108	175	119	110	135	128	154	112	95	1,413
MOON-HINES-TIGRETT OPERATING CO., INC.		26	21	31	26	34	27	28	22	25	48	30	318
MOULTON GAS	24	34	48	46	44	42	38	47	28	35	42	38	466
MOUNDVILLE TELEPHONE	72	37	78	57	57	49	41	42	31	40	33	29	566
MT VERNON WATER & GAS	11	13	28	13	41	42	30	19	29	27	21	10	284
MULGA	41	24	26	34	35	29	34	36	50	27	46	33	415
NEW BROCKTON HOUSING AUTHORITY	1	2	5	0	1	0	1	1	2	4	0	4	21
NEWTON HOUSING AUTHORITY	1	0	0	0	0	0	0	27	12	8	2	1	51
NORTH AL GAS 01	220	207	281	247	298	250	242	354	342	282	278	179	3,180
NORTH AL GAS 02	782	898	1,245	823	1,126	1,155	1,049	1,216	1,002	864	763	613	11,536
NORTHWEST AL GAS	219	213	269	246	359	300	247	276	272	303	232	185	3,121
OTELCO TELEPHONE, LLC	54	56	61	64	51	60	57	55	37	62	44	26	627
OTELCO TELEPHONE, LLC/WALNUT GROVE	15	20	26	20	29	18	19	31	14	19	23	15	249
ONEONTA UTILITIES	234	205	262	231	270	322	319	336	222	301	226	195	3,123
OPELIKA PWR & LIGHT	282	373	353	205	203	193	177	197	187	252	40	154	2,616
OPELIKA WATER	342	452	454	279	303	275	239	268	260	306	280	186	3,644
OPELIKA WATER 02											7	3	10
OPP HOUSING AUTHORITY	0	2	1	0	2	0	2	1	1	1	3	5	18
ORANGE BEACH WATER, SEWER AND FPD												139	139
PALMER PETROLEUM, INC.	23	16	13	39	20	9	13	12	25	26	18	9	223
PERDIDO BAY WATER, SEWER & FPD						186	228	274	256	159	94	63	1,260
PHOENIX PIPELINE, LLC									1	131	115	123	370
PICKENS COUNTY GAS	40	35	37	56	51	30	22	33	24	41	28	12	409
PIEDMONT HOUSING AUTHORITY	6	0	5	2	6	7	9	2	11	17	23	11	99
PIEDMONT WATER, SEWER, & GAS BD	34	33	40	34	51	51	41	46	40	45	101	56	572
PINPOINT LOCATING, INC.									3,019	7,786	6,136	5,025	21,966
PINPOINT LOCATING, INC. 02									149	387	97	84	717
PLAINS MARKETING, LP	16	23	20	14	14	12	11	16	25	39	11	12	213

**ALABAMA ONE CALL
MEMBER TRANSMISSIONS 2000**

MEMBER	JAN	FEB	MAR	APR	MAY	JUN	JUL	AUG	SEPT	OCT	NOV	DEC	TOTAL
PLANTATION PIPELINE	1,336	1,529	1,761	1,697	2,133	2,028	1,676	1,938	1,455	1,807	1,510	1,542	20,412
PRAXAIR, INC.	21	23	33	29	24	28	32	44	28	33	44	56	395
QWEST COMMUNICATIONS	619	609	604	698	775	778	625	793	716	746	596	737	8,296
RED BAY WATER AND GAS BOARD	14	14	16	10	13	12	16	10	10	22	6	3	146
RESNET COMMUNICATIONS	329	411	551	434	592	760	552	691	464	588	597	557	6,526
RIVER GAS CORPORATION	5	9	10	9	36	11	99	30	18	20	17	16	280
RIVIERA UTILITIES (01)	530	635	631	595	816	705	566	661	650	636	479	420	7,324
RIVIERA UTILITIES (02)	358	344	345	388	430	474	465	499	494	500	412	375	5,084
ROANOKE, UTILITIES BOARD OF THE CITY OF	7	14	14	9	8	9	13	14	11	16	9	11	135
ROBERTSDALE, CITY OF	41	22	37	54	46	65	62	70	65	76	53	41	632
ROCKFORD WATER & GAS	13	15	10	10	24	7	9	6	17	16	11	10	148
ROYAL MANAGEMENT	13	15	20	23	21	31	23	23	11	19	40	46	285
RUSSELLVILLE GAS BOARD	120	99	123	86	131	139	98	137	201	151	95	113	1,493
RUSSELLVILLE HOUSING AUTHORITY	9	13	18	10	16	11	4	10	16	21	11	24	163
SAMSON RESOURCES COMPANY	116	133	123	119	124	147	112	135	93	36	39	23	1,200
SARALAND, CITY OF	103	220	161	167	118	138	88	117	98	134	126	109	1,579
SCOTTSBORO HOUSING AUTHORITY	4	2	3	3	2	0	1	6	4	7	5	1	38
SCOTTSBORO WATER, SEWER & GAS	18	25	37	46	29	34	30	36	34	47	36	54	426
SELLERS STATION WATER AUTHORITY	5	6	6	6	13	6	3	6	11	16	8	7	93
SELMA HOUSING AUTHORITY	32	36	39	66	28	22	30	23	26	38	34	35	409
SHEFFIELD HOUSING AUTHORITY	33	40	70	50	32	37	26	23	32	44	27	23	437
SHEFFIELD UTILITIES	237	224	288	230	290	293	261	328	372	324	323	232	3,402
SHELL CHEMICAL	45	55	58	55	41	52	43	125	121	110	99	59	863
SHELL WESTERN E&P, INC. YELLOWHAMMER	0	0	0	0	0	0	0	0	0	0	0	0	0
SILVERHILL, TOWN OF	20	19	18	34	34	26	38	42	38	44	25	19	357
SMITHS WATER AND SEWER AUTHORITY									45	99	107	112	363
SOUTH ALABAMA SEWER SERVICE CORPORATION	133	114	101	125	159	179	178	177	160	164	158	137	1,785
SOUTH ALABAMA UTILITIES	1,775	1,805	2,012	2,027	2,234	2,131	1,984	2,438	1,880	2,140	1,583	2,272	24,281
SOUTH EASTERN DEVELOPMENT CORPORATION	4	68	11	6	23	10	39	9	20	10	28	30	258
SOUTHEAST ALABAMA GAS DIST 01	615	621	604	697	820	747	674	796	608	713	669	521	8,085
SOUTHEAST ALABAMA GAS DIST 02	605	671	762	802	924	895	774	930	710	836	635	486	9,030
SOUTHEAST ALABAMA GAS DIST 03	175	217	230	215	288	253	236	313	266	252	262	216	2,923
SOUTH OF DAUPHIN APARTMENTS	10	31	33	40	39	88	52	60	39	57	74	99	622
SO GA NAT GAS	14	12	18	22	43	33	25	28	21	15	14	8	253
SO GAS TRANSMISSION	17	36	25	26	40	37	39	29	31	58	39	37	414
SO NAT INTRASTATE	124	137	202	210	218	195	146	202	152	251	320	274	2,431
SO NAT GAS-ANNISTON	384	402	431	359	590	475	539	633	514	535	498	410	5,770
SO NAT GAS - AUBURN	341	412	466	355	475	450	713	526	385	538	395	293	5,349
SO NAT GAS-BHAM	1,568	1,776	1,734	1,801	2,247	2,394	1,875	2,037	1,621	1,912	1,613	1,437	22,015
SO NAT GAS - ELMORE	225	236	286	227	293	292	254	275	238	307	324	247	3,204
SO NAT GAS-OPELIKA	446	514	576	479	603	544	764	563	435	586	441	328	6,279
SO NAT GAS-TUSCALOOSA	476	532	569	511	631	574	444	599	411	492	486	441	6,166
SPOONER PETROLEUM COMPANY	6	8	10	4	11	6	5	7	4	9	12	12	94
SPRING CREEK APARTMENTS	25	5	15	30	35	15	13	18	15	8	2	6	187
SPRINT	1,563	1,739	2,250	1,995	2,419	2,453	1,844	2,061	1,555	2,022	1,637	1,733	23,271
STS, INC. (SOUTHERN BELL - GA)	17	41	29	21	24	25	22	46	24	32	19	28	328
STS, INC. (01)	7,674	8,940	9,856	8,253	10,463	9,812	9,202	9,689	8,109	9,537	7,783	6,115	105,433
ST SERVICES	163	155	193	195	228	181	126	222	153	183	162	127	2,088
STEVENSON, UTILITIES BD OF THE TOWN OF	13	7	18	8	26	20	28	26	20	26	14	11	217

**ALABAMA ONE CALL
MEMBER TRANSMISSIONS 2000**

MEMBER	JAN	FEB	MAR	APR	MAY	JUN	JUL	AUG	SEPT	OCT	NOV	DEC	TOTAL
SULLIGENT HOUSING AUTHORITY	0	3	4	3	3	0	1	8	4	5	6	5	42
SUMMERDALE, TOWN OF									14	23	22	9	68
SUMITON GAS BOARD	22	18	12	14	18	14	40	45	41	32	16	20	292
SUNDOWN APARTMENTS	33	71	91	43	30	88	52	71	40	32	44	25	620
SYLACAUGA HOUSING AUTHORITY	5	14	30	19	8	14	10	18	9	21	24	7	179
SYLACAUGA UTILITIES BOARD	114	186	252	153	203	198	202	174	171	209	173	133	2,168
TALLADEGA COLLEGE HILLS APARTMENTS	6	3	8	4	4	6	8	4	7	9	3	7	69
TALLADEGA HOUSING AUTHORITY	9	23	24	11	18	23	10	12	10	13	12	16	181
TALLASSEE, CITY OF	33	32	40	27	33	36	39	38	30	44	38	26	416
TALLASSEE HOUSING AUTHORITY	1	4	0	3	0	3	3	4	2	3	1	1	25
TARRANT HOUSING AUTHORITY	15	16	24	20	35	22	23	32	23	34	20	15	279
TCI CABLE - BIRMINGHAM	1,693	2,151	2,480	1,945	2,446	2,909	2,181	2,539	1,962	2,064	1,818	1,764	25,952
TCI CABLE - FAIRHOPE	588	730	690	695	913	732	607	761	672	701	529	466	8,084
TCI CABLE - MONTGOMERY	1,907	1,988	2,400	2,172	2,616	2,550	2,078	2,340	2,089	2,189	1,787	1,401	25,517
TCI OF LEE COUNTY	710	976	1,041	755	920	799	1,020	896	753	938	700	462	9,970
TENNESSEE GAS PL 01	83	89	135	113	154	159	136	158	108	150	182	139	1,606
TENNESSEE GAS PL 02	40	20	37	26	51	50	39	37	45	34	52	30	461
TENNESSEE GAS PL 03			17	20	51	58	26	44	46	39	44	23	368
TEXACO	19	8	35	28	49	33	31	50	26	19	39	24	361
TEXAS EASTERN GAS 01	136	152	179	157	240	193	183	229	162	241	226	205	2,303
TEXAS EASTERN GAS 02	17	19	21	9	28	30	18	11	18	38	14	25	248
TIMBER RIDGE APARTMENTS	37	18	33	19	16	25	27	21	23	20	23	12	274
TIME WARNER CABLE 02	80	94	142	140	122	113	121	124	137	130	100	120	1,423
TIME WARNER CABLE 03	751	837	859	724	844	754	692	831	704	882	650	598	9,126
TORCH OPERATING	86	62	62	46	62	44	47	49	47	34	28	40	607
TORRENCE CABLEVISION USA, INC.	134	148	149	128	151	121	120	118	118	112	154	159	1,612
TOWNHOUSE SQUARE APARTMENTS	16	13	13	14	12	13	11	9	14	16	33	9	173
TRANSMONTAIGNE PRODUCT SERVICE - EAST	105	144	205	195	205	228	167	133	157	338	299	323	2,499
TRANSCO PL-01	92	88	107	106	110	104	84	136	106	143	138	102	1,316
TRANSCO PL-02	34	32	36	22	31	27	34	34	47	99	38	43	477
TRANSCO PL-03	43	52	53	52	56	83	71	66	73	59	57	52	717
TRANSCO PL-04	199	210	201	167	241	196	168	236	187	210	300	312	2,627
TRAWICK CONSTRUCTION COMPANY, INC.													957
TRUSSVILLE UTILITIES	559	693	817	537	694	776	626	790	592	798	559	617	8,058
TURNERVILLE WATER AND FPD	62	76	79	59	63	72	37	51	39	53	57	44	692
TUSCALOOSA DEPARTMENT OF TRANS.	715	811	957	743	880	866	774	932	723	801	668	620	9,490
TUSCUMBIA GAS	128	104	145	101	127	90	105	126	104	117	86	70	1,303
TUSCUMBIA HOUSING AUTHORITY	44	20	44	35	48	28	37	34	34	30	18	21	393
UNION SPRINGS HOUSING AUTHORITY	0	0	1	3	3	2	1	4	3	6	4	11	38
UNION SPRINGS TELEPHONE CO.	451	436	554	578	648	595	515	505	420	494	453	353	6,002
UNION SPRINGS UTILITIES BOARD	2	5	3	12	24	10	13	14	11	14	6	18	132
UNITED CITIES GAS COMPANY	9	25	25	28	39	25	16	18	11	14	4	22	236
UNOCAL CORPORATION	13	13	25	11	21	16	9	14	5	22	21	8	178
US STEEL							7	29	22	30	23	11	122
US STEEL MINING CO., LLC	0	0	0	0	0	0	1	1	2	4	6	1	15
USG PIPELINE COMPANY	0	0	0	2	1	4	4	7	4	2	4	1	29
UUL, INC. (02)	24,449	27,533	33,000	26,845	33,818	33,818	29,823	34,088	27,899	32,759	25,559	21,203	350,794
VALLEY BROOK APARTMENTS		46	53	26	46	42	58	56	26	54	39	49	495
VERNON HOUSING AUTHORITY	4	7	3	5	4	4	2	4	5	4	3	4	49

**ALABAMA ONE CALL
MEMBER TRANSMISSIONS 2000**

MEMBER	JAN	FEB	MAR	APR	MAY	JUN	JUL	AUG	SEPT	OCT	NOV	DEC	TOTAL
VILLAGE AT MOODY	3	8	20	6	7	4	12	8	3	3	58	36	168
VILLAGE GREEN APARTMENTS	218	245	202	212	311	258	227	328	123	137	244	262	2,767
VINA NATURAL GAS	4	6	11	7	2	10	3	3	3	7	4	0	60
WADLEY, TOWN OF	4	3	4	4	6	6	2	5	10	3	2	12	61
WEATHERLY CABLE	6	17	21	10	41	19	41	34	16	12	9	10	236
WEDGEWOOD MANOR APARTMENTS	28	0	3	0	1	1	0	25	19	35	24	23	159
WEDOWEE, TOWN OF	61	29	34	25	44	60	36	79	70	66	49	32	585
WEST JEFFERSON	25	11	14	12	14	14	9	10	5	10	10	10	144
WEST MORGAN-EAST LAWRENCE WATER	175	220	198	163	198	188	170	270	223	236	216	187	2,444
WFS-NGL PIPELINE CO., INC.	42	30	49	30	52	36	34	51	58	188	176	184	930
WHEELER BASIN NATURAL GAS COMPANY	211	262	233	216	282	228	227	332	270	256	384	226	3,127
WILCOX COUNTY GAS DISTRICT	16	24	20	28	29	21	22	13	17	28	26	23	267
WILLIAMS COMMUNICATIONS	1,948	2,158	2,713	2,475	3,084	3,198	2,442	2,870	2,233	2,827	2,307	2,454	30,709
WILTON, TOWN OF	14	22	43	22	37	37	28	30	31	45	19	12	340
WINFIELD HOUSING AUTHORITY	1	2	0	0	0	1	1	2	1	5	2	1	16
YORK, CITY OF	11	10	6	5	16	7	11	12	9	17	6	8	118
TOTAL	191,057	217,640	249,084	215,896	269,922	264,479	237,884	277,982	234,713	278,002	222,519	196,404	2,855,464

**ALABAMA ONE CALL
COUNTY DISTRIBUTION REPORT - 2000**

COUNTY	JAN	FEB	MAR	APR	MAY	JUNE	JULY	AUG	SEPT	OCT	NOV	DEC	TOTALS
AUTAUGA	266	390	467	350	517	525	451	465	451	476	423	298	5,079
BALDWIN	1,094	1,265	1,273	1,324	1,638	1,501	1,429	1,652	1,507	1,574	1,301	1,106	16,664
BARBOUR	93	103	155	169	142	134	137	143	138	165	123	132	1,634
BIBB	92	98	122	87	131	121	89	123	95	148	87	113	1,306
BLOUNT	141	152	153	154	175	165	209	244	199	207	116	84	1,999
BULLOCK	9	11	33	50	35	16	26	19	16	34	11	28	288
BUTLER	78	68	61	56	63	45	51	61	56	93	68	63	763
CALHOUN	440	499	541	455	668	632	583	659	575	943	565	458	7,018
CHAMBERS	94	148	149	112	135	131	127	134	108	126	116	94	1,474
CHEROKEE	7	12	10	3	12	19	14	18	14	89	12	14	224
CHILTON	201	235	299	252	319	307	284	302	282	344	261	196	3,282
CHOCTAW	2	4	13	12	8	16	8	13	15	3	6	3	103
CLARKE	140	166	166	161	183	189	179	262	257	221	167	137	2,228
CLAY	48	70	54	36	42	43	29	48	37	38	45	27	517
CLEBURNE	37	64	63	62	81	72	82	84	60	75	61	45	786
COFFEE	102	87	106	126	120	111	90	130	131	146	136	133	1,418
COLBERT	287	272	341	276	378	317	298	408	402	362	366	240	3,947
CONECUH	53	74	91	59	97	69	65	95	62	106	63	58	892
COOSA	36	37	50	34	49	57	42	48	64	74	51	34	576
COVINGTON	47	79	58	93	114	109	111	119	92	96	90	74	1,082
CRENSHAW	11	31	27	12	35	17	20	34	26	43	35	33	324
CULLMAN	474	577	423	403	604	565	513	575	567	748	625	465	6,539
DALE	84	135	151	107	146	141	136	185	142	144	162	103	1,636
DALLAS	150	167	217	195	151	179	168	214	180	187	179	139	2,126
DEKALB	31	35	75	66	56	56	60	75	48	115	59	67	743
ELMORE	498	584	574	500	588	569	526	591	499	652	500	414	6,495
ESCAMBIA	161	196	236	212	263	287	267	269	258	363	229	192	2,933
ETOWAH	305	350	316	299	406	424	409	520	322	416	315	256	4,338
FAYETTE	64	45	98	95	87	88	52	65	61	138	98	86	977
FRANKLIN	82	89	113	76	116	137	94	110	164	142	77	87	1,287
GENEVA	21	42	37	44	53	47	53	76	63	90	82	53	661
GREENE	42	24	53	43	39	45	35	45	56	59	65	34	540
HALE	64	98	91	128	84	90	100	120	85	94	93	72	1,119
HENRY	81	56	53	51	61	73	50	71	47	82	70	43	738
HOUSTON	362	404	482	490	588	572	480	603	453	544	396	281	5,655
JACKSON	63	87	99	92	88	100	108	170	167	201	100	91	1,366
JEFFERSON	4,703	5,442	5,840	5,044	6,183	6,659	5,690	6,521	5,201	6,712	5,038	4,669	67,702
LAMAR	45	39	58	48	82	69	48	67	53	57	45	40	651
LAUDERDALE	702	721	863	714	967	856	843	953	750	923	791	680	9,763
LAWRENCE	171	198	196	193	248	188	168	254	216	221	234	132	2,419
LEE	791	1,045	1,142	868	1,051	915	1,074	1,022	853	1,080	868	566	11,275
LIMESTONE	498	821	966	685	655	621	553	617	555	595	424	328	7,318
LOWNDES	46	72	70	55	50	59	50	47	50	67	46	22	634
MACON	125	119	157	87	137	126	120	146	126	164	116	64	1,487
MADISON	1,721	1,656	2,585	1,667	2,404	2,507	2,314	2,877	2,312	2,467	1,978	1,709	26,197
MARENGO	75	85	83	78	100	106	111	79	92	88	84	57	1,038

**ALABAMA ONE CALL
COUNTY DISTRIBUTION REPORT - 2000**

COUNTY	JAN	FEB	MAR	APR	MAY	JUNE	JULY	AUG	SEPT	OCT	NOV	DEC	TOTALS
MARION	99	107	131	124	186	122	99	176	124	146	108	68	1,490
MARSHALL	146	165	196	198	252	216	237	260	259	346	250	205	2,730
MOBILE	2,263	2,644	2,860	2,675	3,038	2,864	2,730	3,471	2,762	3,325	2,707	2,430	33,769
MONROE	81	78	89	81	97	59	62	88	80	129	65	82	991
MONTGOMER	1,566	1,557	1,911	1,772	2,075	2,006	1,623	1,841	1,567	1,957	1,583	1,193	20,651
MORGAN	716	969	902	958	1,224	912	897	1,011	805	948	966	665	10,973
PERRY	36	56	55	41	57	37	30	56	33	64	44	36	545
PICKENS	79	92	83	102	96	62	58	86	65	106	94	51	974
PIKE	82	112	99	106	151	115	116	120	101	124	92	70	1,288
RANDOLPH	79	66	77	56	82	102	67	154	107	117	82	64	1,053
RUSSELL	230	266	274	303	327	301	306	279	223	305	225	172	3,211
SHELBY	2,375	2,646	3,370	2,929	3,647	3,635	3,199	3,689	2,924	3,591	2,722	2,502	37,229
ST CLAIR	553	557	563	483	660	578	556	652	561	631	434	385	6,613
SUMTER	63	77	74	83	91	80	73	83	61	93	82	88	948
TALLADEGA	323	402	526	372	491	460	414	418	364	485	447	352	5,054
TALLAPOOSA	195	228	255	194	247	206	359	241	228	431	305	173	3,062
TUSCALOOSA	1,399	1,564	1,707	1,322	1,754	1,611	1,508	1,835	1,406	1,544	1,557	1,121	18,328
WALKER	306	315	277	249	268	310	333	348	335	342	215	172	3,470
WASHINGTON	40	70	55	42	38	44	41	42	42	52	37	36	539
WILCOX	19	40	30	33	33	33	29	14	26	43	31	26	357
WINSTON	69	66	89	73	87	108	110	65	70	72	51	51	911
TOTAL	25,356	29,029	32,833	28,319	35,050	33,936	31,193	36,262	30,050	36,563	28,874	23,962	371,427

2000 PUBLICITY AND ACTIVITIES

I. PUBLIC TALKS, PRESENTATIONS AND ASSOCIATION MEETINGS

Alabama Cable Television Association 15th Annual Legislative Breakfast -
Montgomery, AL

Alabama Gas Pipeline Safety Meeting – Montgomery, AL

Alabama Natural Gas Association Spring Seminar - Montgomery, AL

Contractor Breakfast – Trussville, AL

Contractor Expo – Macon, GA

Dig Safely Training – Birmingham, AL

Gas Safety Seminar – Presentation – Fort Payne, AL

Greater Birmingham Association of Homebuilders – Builder Appreciation
Night – Birmingham, AL

Joint Utility Locating Meeting – Tri-County area – Decatur, AL

The Pipeline Group – Safety Meeting – Demopolis, AL

The Pipeline Group – Safety Meeting – Pelham, AL

Southeast Natural Gas Distribution Short Course – Tuscaloosa, AL

Southeast Utility Protection Council Meetings – Quarterly meetings

Utility Coordination Council Monthly Meetings - Birmingham, AL

Utility Coordination Council Monthly Meetings – Limestone/Morgan
County, AL

II. ARTICLES AND PUBLICATIONS

AIA Membership Directory and Buyer's Guide – Advertisement

Alabama Construction News - Quarterly Editions - Advertisement

Alabama Construction Directory and User's Guide - Associated Builders and Contractors Association - Advertisement

Alabama Contractor Magazine - Convention Issue - Advertisement

Alabama Industry and Manufacturers Association Directory – Advertisement

Alabama Living Magazine – Alabama Rural Electric Association - April Issue – Advertisement

Alabama Mississippi Telephone Association - Membership Directory – Directory Listing

Alabama Road Builders Association Tri-Annual Magazine and Directory – Advertisement

Alabama Rural Water Association Directory - Advertisement

Alabama Rural Water Association – The Waterline – Quarterly Publication – Advertisement

Alabama Utility Contractors Annual Magazine – Advertisement

Associated Builders and Contractors Directory and User's Guide - Advertisement

Associated General Contractors Action News Magazine - Monthly - Advertisement

Associated General Contractors – Constructor - National Membership Directory - Advertisement

Associated General Contractors Membership Directory – Alabama Chapter - Advertisement

II. ARTICLES AND PUBLICATIONS (continued)

Bill Insert – Alabama Power Company

Bill Insert – BellSouth

Birmingham Area Map – Advertisement

Birmingham Business Journal - Associated Builders and Contractors Association Issue – Advertisement

Birmingham Business Journal – February, March, June, July, and August Editions - Advertisement

Birmingham Chamber of Commerce Atlas Project – Advertisement and Webpage Banner Advertisement

Birmingham Chamber of Commerce – Regional Directory - Advertisement

Birmingham Magazine – Associated Builders and Contractors Section – May Issue - Advertisement

Birmingham Magazine – Associated General Contractors Section – November Issue – Advertisement

Birmingham Magazine – Parade of Homes Issue – September Issue – Advertisement

Birmingham Magazine – General Contractor and Engineer Week Issue – Advertisement

Builder/Architect Magazine - October 2000 – Advertisement

Business Alabama Monthly – January, April, August and October Issues - Advertisement

City Map – Auburn, AL – Advertisement

City Map - Dothan, Enterprise, Ozark and Fort Rucker, AL- Advertisement

City Map – Gadsden, Attalla, Rainbow City and Glencoe, AL – Advertisement

II. ARTICLES AND PUBLICATIONS (continued)

City Map – Huntsville, AL – Advertisement

City Map - Huntsville and Decatur, AL - Advertisement

City Map – Mobile, AL - Advertisement

City Map – Montgomery/Prattville, AL – Advertisement

City Map – Tuscaloosa, AL - Advertisement

County View Shopper - Advertisement

Dixie Contractor Magazine - Monthly Publication - Advertisement

Greater Birmingham Association of Homebuilders Parade of Home Book
– Advertisement

Greater Birmingham Association – Chip and Savings - Advertisement

Heavy Equipment News – September and October Issue – Advertisement

National Association of Women in Construction – Birmingham Chapter –
Vulcanette – Monthly Publication – Advertisement

Weather E Forecast – Daily Email Weather forecast Advertisement –
Multiple Months

Yellow Page Listings for multiple telephone companies in Alabama

III. ADVERTISING/PUBLIC RELATIONS ACTIVITIES

Airplane Banner - Area College Football Games
Talladega Raceway
Senior Bowl
Blue/Gray Game

Radio Spots on Alabama Radio Network

Media Kit for Member Companies with “Dig Safely” Information

IV. ALABAMA ONE CALL PUBLICATIONS

New Member Flyers

V. ONE-CALL MEETINGS

Alabama One Call Annual Membership Meeting - March 2000

Disaster Recovery Partnership Meetings

One Calls of America, Inc. – Bi-Annual Meetings

One Call Systems International Damage Prevention Symposium –
Phoenix, AZ

One Call Systems International Delegates Mid-Winter Meeting – San
Antonio, TX

One Call Systems International Meeting – Las Vegas, NV

Southeast Regional One-Call Spring Meeting – Eureka Springs, AR

Southeast Regional One-Call Fall Meeting – Biloxi, MS