



**ANNUAL OPERATIONS REPORT
2011**



2011 ANNUAL SUMMARY

We knew 2011 would be a year of change, due to the decision by the Board of Directors to display our commitment to the 811 message by changing the name under which we do business from Alabama One Call to Alabama 811. Beginning in January, we updated all of our educational material and began operating as Alabama 811. This came after several years of transitioning our message from call "Alabama One Call" to call "811" to protect underground facilities. We chose to ease into the name change by spending a couple of years with associating the 811 message to the existing one call program.

However, we had no way of knowing exactly how much change we would endure before the year was out. On April 27th, when so much of the state was effected by the devastation left by the tornadoes that ripped through our state, Alabama 811 was no different. Our building, not quite four years old at the time, took a direct hit by the F-5 tornado that came just north of Birmingham on that early evening. The extent of the damage was such that we could not occupy the building.

As part of our business continuity program we had in place, we had our calls and locate request access routed to our software partner, Texas 811, and our backup servers. Texas 811 dedicated customer service representatives to handle our call volume while we got our feet back on the ground. For approximately 4 business days, Texas 811 processed all of our inbound locate requests. One of our other partners, Tennessee 811, also came to our assistance by allocating space in their building to have four of our customer service representatives report to work out of their office. For the next month, we rotated 4-6 employees into Tennessee and 3 to Texas to process locate requests. In addition 4 other employees worked out of the temporary office space we had acquired and processed web entry tickets (e-ticket) that many of our remote ticket entry users and regular excavators were utilizing.

By the first week of June, we were back completely working out of our temporary office. We continued to work there while our building was demolished and rebuilt. We were fortunate to cross paths with Millworks Construction who assisted us with our insurance claim and our rebuild. As of December 19, 2011, just under eight months after the loss of our building, we were back into our newly constructed office building. It was good to be home.

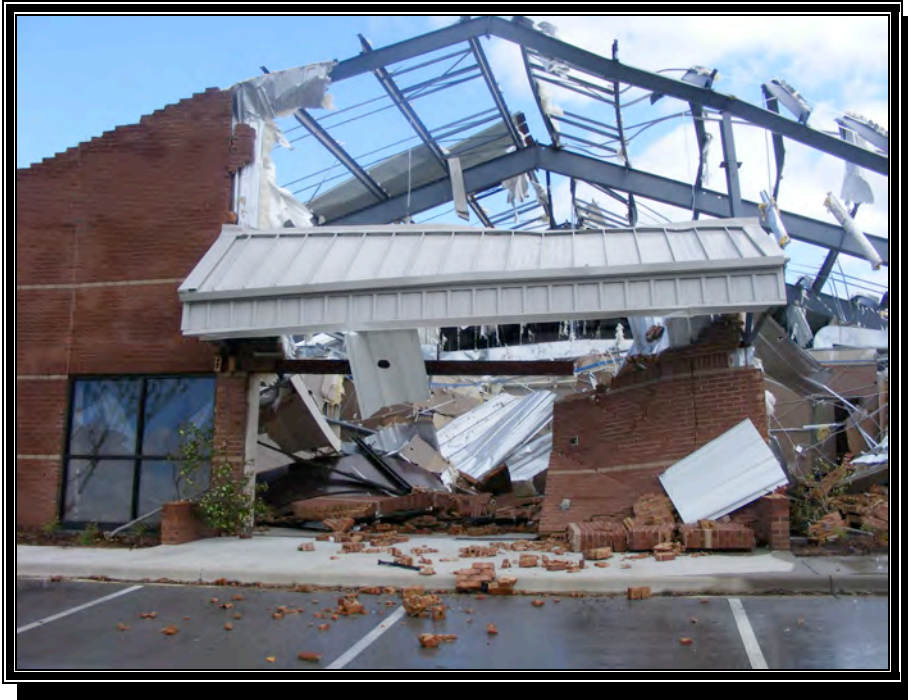
All of that on top of our usual yearly activities!

Operationally, we saw some decline again this year after the rise in 2010 in total ticket volume. We had a decrease in ticket volume in 2011 of 3%. The largest decrease was in April resulting in 18% decline as compared to April 2010. We did continue to increase in the numbers of members participating in the 811 program with our membership growing by approximately ten (10) underground facility owners over the previous year.

We continued to focus on the educational programs through various media and social outlets throughout the state to do our part to ensure Alabama continues to be a safe place to live and work. In addition, Alabama 811 has worked closely with the Alabama Damage Prevention Alliance (ADPA) to help promote safe excavation practices and awareness programs.

Moving forward into 2012, Alabama 811 will convert to a new platform of our GeoCall software; update and improve our business continuity program from lessons learned; and continue to strive to provide quality service to both our member companies and the excavating community.

Annette R. Reburn
Executive Director
February 2012



**After
Tornado...**

**April 28,
2011**



**After
Rebuild...**

**December 19,
2011**

ALABAMA 811 MEMBERSHIP LIST

AT&T/D
AT&T/T
Access Fiber Group, Inc.
Air Products & Chemicals
Alabama Department of Transportation
Alabama Gas Corporation
Alabama Power Company
Alabama Utility Services, LLC
Alabama Wastewater Systems, LLC
Alabaster Water Board
AlaTenn Pipeline Company
Albertville Municipal Utilities Board
Alexander City, City of
American Midstream
American Water
Anniston Water Works and Sewer Board
Ardmore Telephone
Arlington Properties
Ashton Place Apartments
Athens Utilities, City of
Atmore, City of
Atmos Energy
Auburn Water Works Board, City of
Baldwin County Commission
Baldwin County EMC
Baldwin County Sewer Service
Bakerhill Water Authority
Bay Gas Storage Company, Inc.
Bayou La Batre Utilities
BCI/DSSI Services LLC
Bear Creek/Hackleburg Housing Authority
Beauregard Water Authority
Belforest Water System
Berry, Town of
Berry Housing Authority
Bioflow – Russell Lands, Inc.
Birmingham Water Works & Sewer Board
Bishop Petroleum, Inc.
Black Belt Energy
Black Box Network Services, Inc. – Gov. Solutions
Black Warrior Electric
Black Warrior Methane Corporation
Blount County Water Authority
Boaz Gas Board
Boaz Water and Sewer Board
Boston, Housing Authority of
BP Products North America
Brent Utilities Board, City of
Brewton, City of
Bridgeport Utilities
Bright House Networks – Birmingham
Bright House Networks – Eufaula & Wetumpka
Brindlee Mountain Telephone Company
Brookside, Town of
Buckeye Partners LP
Butler, Town of Utilities Board
Cable Alabama Corporation
Cable One
Cable Options
Calera Water & Gas Board
Camellia Communications
Camp Hill, Town of
Canoe Water & Fire Protection Authority
Carbon Hill Housing Authority
Carbon Hill Utilities Board
Carroll's Creek Water Authority
Cave Spring, City of
Central Alabama Electric Cooperative
Central Talladega County Water District
Central Water Works
Centreville Water
CenturyTel of Alabama
Charter Communications of Alabama
Charter Communications – Lanett
Cherokee Water and Gas Department
Chevron Pipeline Company
Chevron U.S.A. Inc.
Childersburg Water, Sewer & Gas Board
Chilton Water Authority
Clarke-Mobile Counties Gas District
Clayton Housing Authority
Clebune County Water Authority
Cobridge Communications
Colonial Pipeline
Columbia Square Apartments
Columbiana, City of
Columbiana Water Board
Com-Link, Inc.
Comcast Cablevision of Gadsden
Comcast Cablevision (Huntsville)
Comcast Cablevision (Mobile)
Comcast Cablevision of the Shoals
Comcast Cablevision (Tuscaloosa)
Coosa Valley Electric Cooperative
Cordova Water and Gas
Cottonwood Housing Authority
Covington Electric Cooperative, Inc.
Cullman Electric Cooperative
Cullman-Jefferson Counties Gas District
Cullman Water Department, City of
Dadeville Housing Authority
Dadeville Water Supply & Gas Board
Daphne Utilities Board, City of
Dauphin Island Gathering Partners

ALABAMA 811 MEMBERSHIP LIST

DCP Midstream, LLC
Decatur Housing Authority
Decatur Utilities
DeKalb-Cherokee Counties Gas District
Demopolis CATV Company
Demopolis Water Works and Sewer Board
Denbury Onshore LLC
Diverse Power
Dixie Electric Cooperative
Dixie Pipeline Company
Dora Utilities
Douglas Pipeline
Douglas Water Authority
DukeNet Communications, LLC
East Alabama Water District
East Central Baldwin Water Authority
East Central Gas District
East Cullman Water System
El Paso Production Company
Enbridge Pipelines (Alabama Gathering), Inc.
Enbridge Pipelines (Alabama Intrastate), Inc.
Energen Resources – Oak Grove
Energen Resources – Vance
Englewood Hulls Water System
Enterprise Products Operating, LLC
Enterprise Products Operating L.P.
Enviro-Systems, LLC
Escambia Operating Company, LLC
Eufaula Water Works & Sewer Board
Exxon Mobil Corporation
Fairhope Utilities Board
Falkville, Town of
Farmers Telephone Co-Op, Inc.
Fayette Gas Board
Fayetteville Water Authority
Fiberlincs LLC
Flomaton, Town of
Floral Gas Department
Florence, City of
Florence Housing Authority
Florida Gas Transmission Company
Fort Payne Water Works
Fort Rucker Army Base/Remtech Services
Four Star Oil & Gas
Freebird Gas Storage
Freemanville Water System, Inc.
Frontier Communications of Alabama
Frontier Communications of Lamar Co.
Frontier Communications of the South
Fultondale Gas Board
Genesis Crude Oil, L.P.
Geneva County Gas District
GeoMet, Inc.
Georgiana Housing Authority
Gordo, Town of
Grand Bay Water Works Board, Inc.
Granger Energy of Decatur LLC
Graysville Utilities
Greater Gadsden Housing Authority
Greenhill Water & Fire Protection Authority
GTC, Inc.
Guin Housing Authority
Gulf Atlantic Operations, LLC
Gulf Coast Mineral, LLC
Gulf Shores, Utilities Board of the City of
Gulf South Pipeline
GulfSafe
Gulfstream Natural Gas System, LLC
Gulf Telephone Company
Guntersville Water Board
Haleyville Housing Authority
Hamilton Housing Authority
Hanceville Housing Authority
Harbor Communications, LLC
Hartselle Utilities Board
Harvest Monrovia Water Authority
Hayneville Telephone Company, Inc.
Hilcorp Energy Company
HighMount Exploration and Production LLC
Hoover, City of
Huguley Water and Fire Protection
Hunt Refining Company
Huntsville, City of
Huntsville, City of Water Pollution Control
Huntsville Housing Authority
Huntsville Utilities, Electric, Gas and Water
Integra Water
Interstate Fibernet
Jabsco Oil Operating, LLC
Jacksonville Gas Water & Sewer Board
Jemison Water Department
Jenkins Brick Company
Joe Wheeler EMC
Kentucky Data Link, Inc.
Kinder Morgan
KNOLOGY of Montgomery
KNOLOGY – Columbus, GA
Knology of the Valley
Lafayette, City of
Lamar County Gas District
Lamar County Water System
Lanett, City of
Lanett Housing Authority
Lee Chambers Utilities District

ALABAMA 811 MEMBERSHIP LIST

Lemoyne Water System, Inc.
Level 3 Communications
LightCore, a CenturyLink Company
Lightwave Technologies, LLC
Lincoln, City of
Linde Gas, Inc.
Linde, LLC
Linden, City of
Lindsey Communications
Lineville Housing Authority
Lineville Waterworks and Sewer Board
Livingston, City of Utility Board
Loachapoka Water Authority
Loxley, Town of
Lynn Water Works
Madison, City of, Public Works Department
Madison, City of Water and Wastewater
Madison River Communications
Magellan Midstream Partners, L.P.
Maplesville Waterworks & Gas Board
Marshall County Gas District
Marshall Dekalb Electric Cooperative
MCB Water Authority
MCI Telecommunications
McCall Water System, Inc.
Mediacom
Mediacom – Huntsville
Millry Telephone Company, Inc.
Mitchell Water System, Inc.
Mobile, City of
Mobile Area Water and Sewer Service
Mobile County Water, Sewer and FPD
Mobile Gas Service
Momentum Telecom
Monroe Gas Storage, LLC
Monroeville, City of Wastewater Department
Monroeville Water Works
Montevallo Water Works
Moulton Gas Board, Town of
Moundville Telephone
Mount Vernon Water & Gas
Mulga, Town of
Muscle Shoals, Utilities Board of the City of
National Telephone of Alabama DBA TEC
New Hope Telephone Cooperative
North Alabama Gas District
North Baldwin Utilities
Northeast Morgan County Water Authority
Northwest Alabama Gas District
Notasulga, Town of
Oakman Telephone
OGP Operating, Inc.
Otelco Telephone, LLC
Otelco Telephone, LLC / Blountsville Division
Otelco Telephone, LLC / Walnut Grove
Oneonta Utilities Board
Opelika Housing Authority
Opelika Power and Light
Opelika Water Works
Opp Housing Authority
Orange Beach Wastewater Treatment Plant
Orange Beach Water Authority
Owassa Brownville Water Authority
Palmer Petroleum, Inc.
Parker Creek Water Company LLC
Perdido Bay Water, Sewer & FPD
Phil Campbell Housing Authority
Phil Campbell Water Works & Sewer Board
Pickens County Natural Gas District
Piedmont Housing Authority
Piedmont Water, Gas & Sewer Board
Pine Belt Telephone Company
Pine Bluff Water Authority
Pine Energies, Inc.
Plains Marketing, LP
Plantation Pipeline Company
Poarch Creek Indians Utilities Authority
Praxair, Inc.
Quantum Resources Management LLC
Qwest Communications
Red Bay Water and Gas
Riviera Utilities
Roanoke Telephone Company
Roanoke, Utilities Board of the City of
Robertsdale, City of
Robinson's Bend Operating Company
Rockford Water & Gas
Russellville Gas Board
Samson Resources Company
Saraland, City of
Saraland Water Service
Scottsboro Electric Power Board
Scottsboro Housing Authority
Scottsboro Water, Sewer & Gas Board
Sellers Station Water System
Selma Housing Authority
SG Resources, Mississippi, LLC
Sheffield Utilities
Shelby County Water Services
Shell Chemical
Shell Western E&P, Inc.
Silverhill, Town of
Singing River Electric Power Association
Slocomb Water Works & Sewer Board

ALABAMA 811 MEMBERSHIP LIST

Smiths Water and Sewer Authority
South Alabama Electric Cooperative
South Alabama Gas District
South Alabama Utilities
South Eastern Electric Development
South of Dauphin Apartments
Southcross Energy GP, LLC
Southeast Alabama Gas District
Southeast Supply Header
Southern Earth Sciences, Inc.
Southern Gas Transmission Company
Southern Power Company
Southern Light, LLC
Southern Natural Gas
Spanish Fort Water System
Spring Creek Apartments
Sprint
Stevenson, Utilities Board of the Town of
Stewartville Water Authority
Sulligent Housing Authority
Sumiton Gas Board
Summerdale, Town of
Sylacauga Housing Authority
Sylacauga Utilities Board
Talladega Housing Authority
Talladega Water and Sewer Board
Tallapoosa River Electric Cooperative
Tallassee, City of
Tallassee Housing Authority
TDS Telecom – Butler, Goshen, Grove Hill
TDS Telecom - Centre
Telepak Networks, Inc.
Tenaska Alabama Partners, LP
Tennessee Gas Pipeline Company
Texas Eastern Transmission Corp.
Thorsby, Town of
Tower Cloud, Inc.
Transcontinental Pipeline
Troy Cablevision, Inc.
Trussville Utilities
Turnerville Water and F.P.D.
Tuscaloosa, City of
Tuscumbia Gas Department
Tuscumbia Housing Authority
Tuskegee, Utilities Board of
tw telecom
Union Springs Telephone Company
Union Springs Utilities
University of Alabama in Huntsville
Unocal Corporation
Uriah Water System
U S Amines
US Steel
USG Pipeline Company
VAW Water System, Inc.
Vernon Housing Authority
Vernon Water and Sewer Board
Vina Natural Gas
Wadley, Town of
Warrior River Water Authority
Weatherly Utility Services, LLC
Wedowee, Town of
West Jefferson Gas System
West Morgan – East Lawrence Water Authority
Wheeler Basin Natural Gas
Whitehouse Water System
Wilcox County Gas District
Williams Field Services
Wilton, Town of
Windstream Communications, Inc.
Winfield Housing Authority
Wiregrass Electric Cooperative
York, City of

TOTAL MEMBERSHIP 385

Dec 11

ASSOCIATE MEMBERS

PROCALL SERVICES

13026 Riverland Cove
Biloxi, MS 39532-9506
Contact: Marty Roberts
(228) 392-5889

USIC Locating Service, Inc.

11640 Arbor Street, Suite 200
Omaha, NE 68144
(800) 778-9140

UTILIQUEST – GEORGIA

4 Concourse Parkway NE
Suite 220
Atlanta, GA 30328-6109
Contact: H J McGinness
(678) 250-2605

SUPPORTING MEMBERS

GEORGE COOP PROMOTIONS, INC.

455 Pinewood Lake Dr
Venice, FL 34292-3680
Contact: Karen Vernon
(205) 491-3131

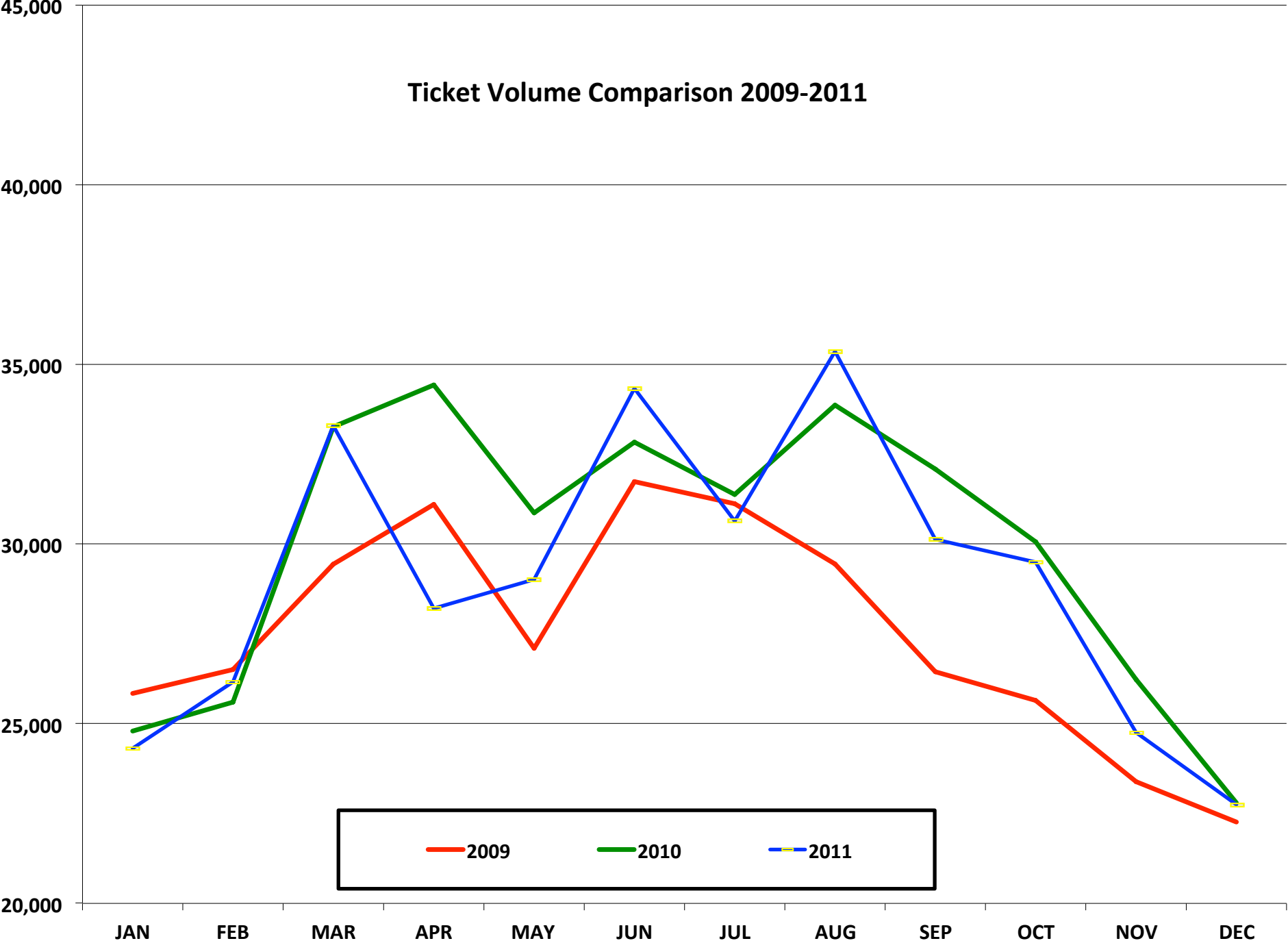
ALABAMA UTILITY LOCATING SERVICES, LLC

406 5th Avenue N
Suite 4
Oneonta, AL 35121
Contact: Crystal Thomason
(205) 353-6119

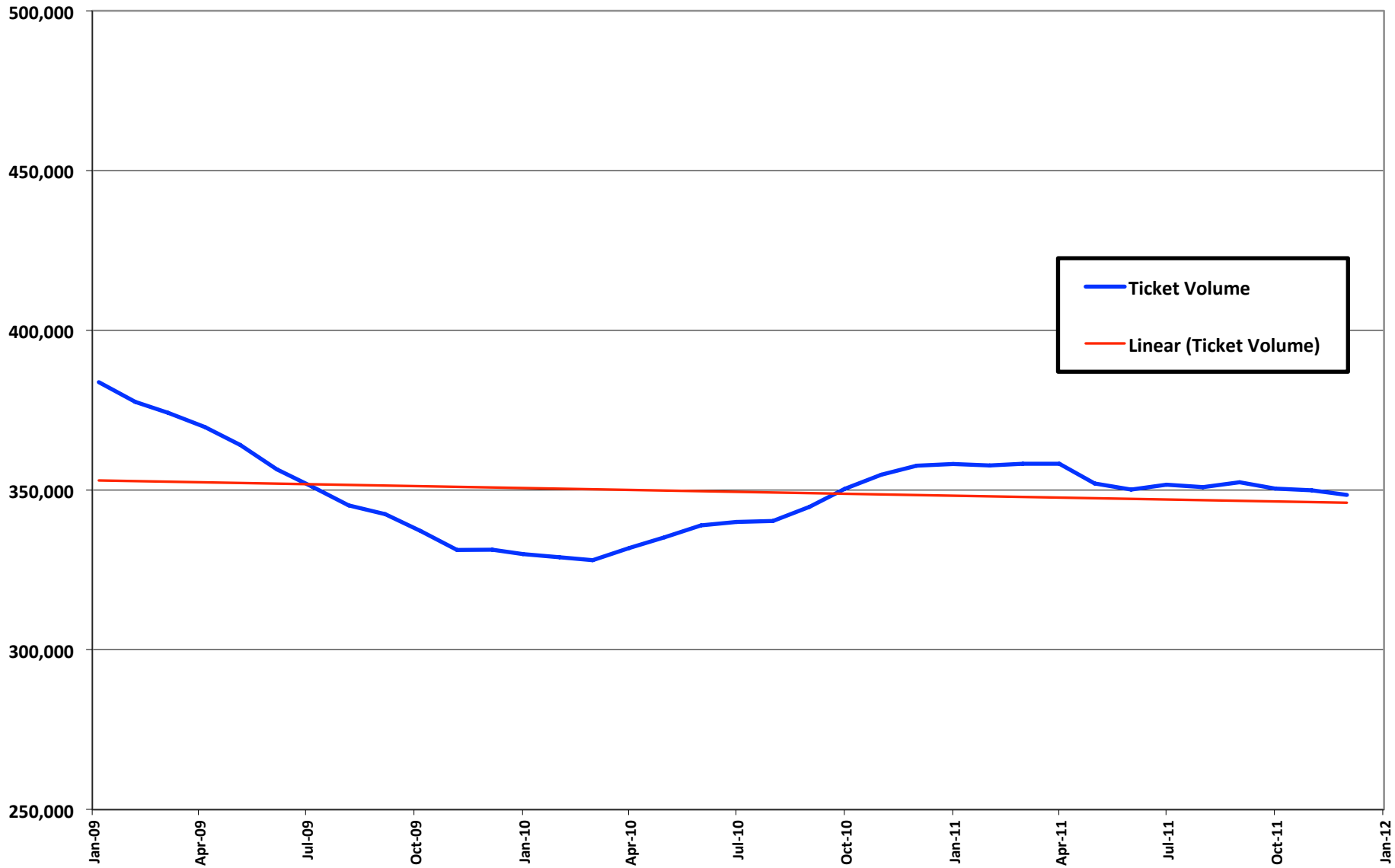
Historical Report of Ticket Volume 2009-2011

MONTH	2009	INCR	%	2010	INCR	%	2011	INCR	%
JAN	25,841	(6,175)	-19%	24,790	(1,051)	-4%	24,310	(480)	-2%
FEB	26,503	(3,491)	-12%	25,594	(909)	-3%	26,157	563	2%
MAR	29,438	(4,385)	-13%	33,266	3,828	13%	33,295	29	0%
APR	31,106	(5,631)	-15%	34,428	3,322	11%	28,208	(6,220)	-18%
MAY	27,095	(7,643)	-22%	30,867	3,772	14%	29,012	(1,855)	-6%
JUN	31,740	(5,395)	-15%	32,837	1,097	3%	34,331	1,494	5%
JUL	31,126	(5,872)	-16%	31,377	251	1%	30,644	(733)	-2%
AUG	29,448	(2,740)	-9%	33,868	4,420	15%	35,364	1,496	4%
SEP	26,445	(5,239)	-17%	32,085	5,640	21%	30,132	(1,953)	-6%
OCT	25,647	(5,990)	-19%	30,061	4,414	17%	29,495	(566)	-2%
NOV	23,382	108	0%	26,224	2,842	12%	24,750	(1,474)	-6%
DEC	22,258	(1,352)	-6%	22,793	535	2%	22,745	(48)	0%
Total	330,029	(53,805)	-14%	358,190	28,161	9%	348,443	(9,747)	-3%

Ticket Volume Comparison 2009-2011



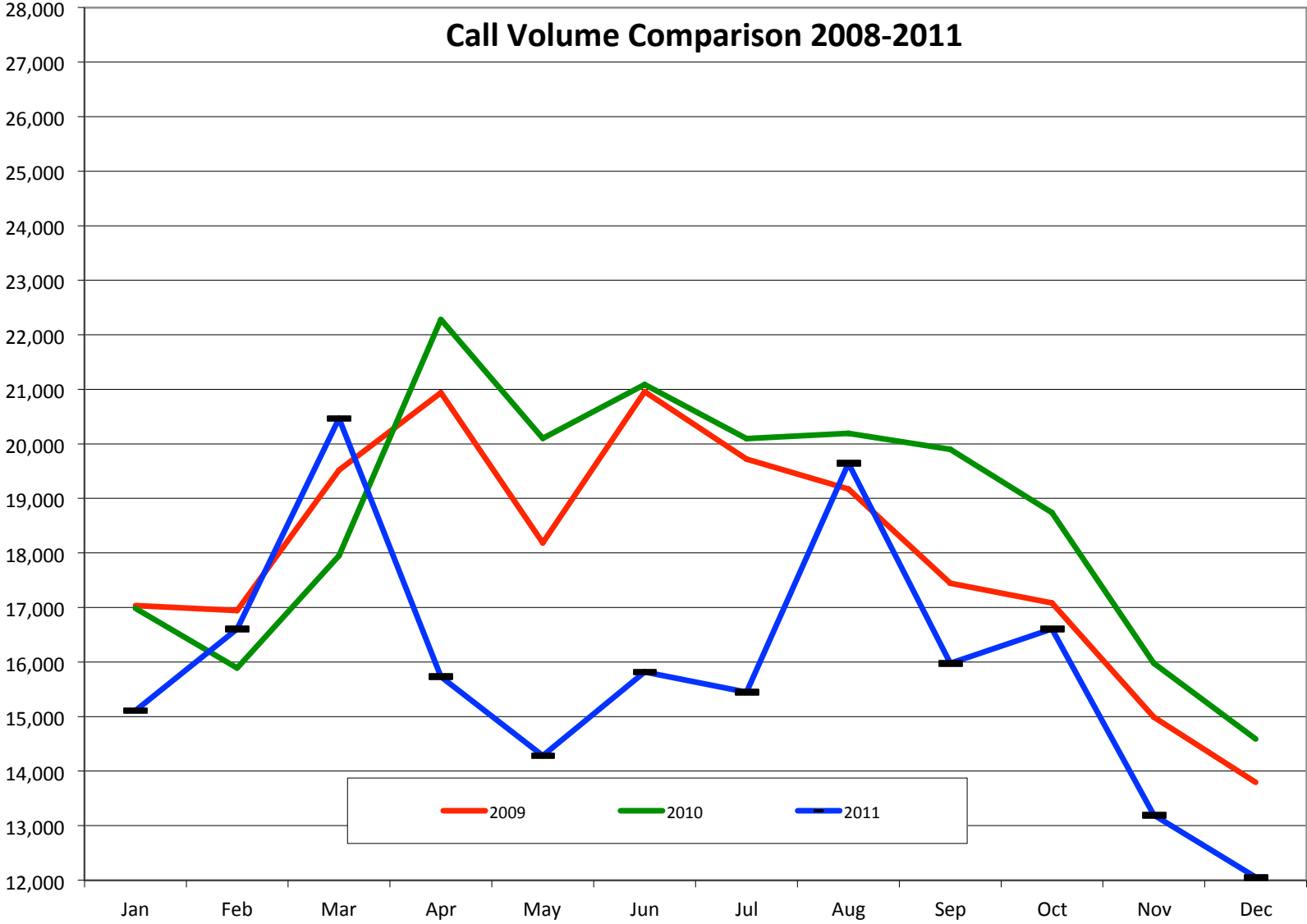
Ticket Volume 12 Month Moving Totals 2009-2011



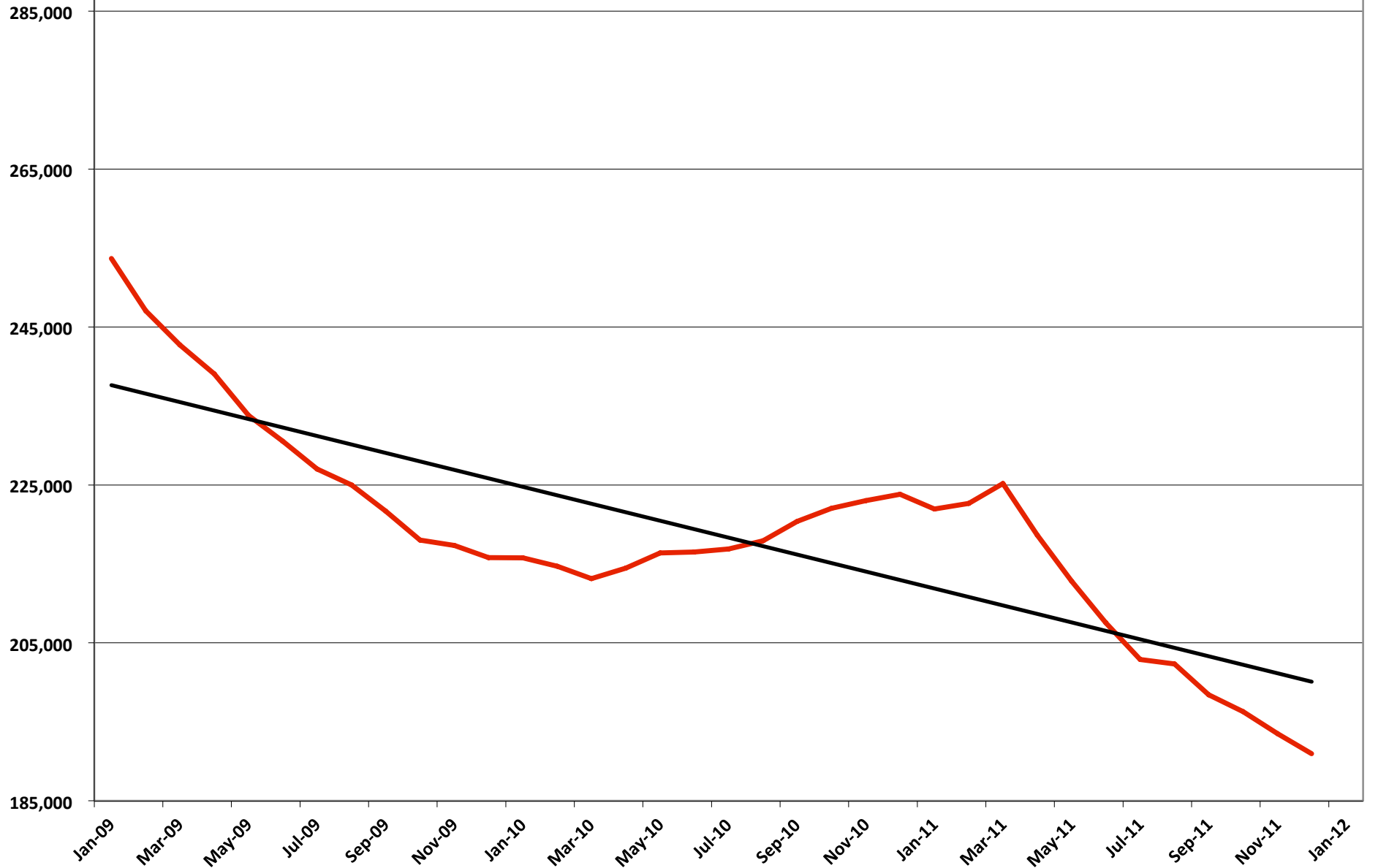
**Historical Report of Call Volume
2009-2011**

MONTH	2009	INCR.	%	2010	INCR.	%	2011	INCR.	%
Jan	17,041	(3,587)	-17%	16,984	(57)	0%	15,115	(1,869)	-11%
Feb	16,948	(6,643)	-28%	15,895	(1,053)	-6%	16,610	715	4%
Mar	19,522	(4,314)	-18%	17,953	(1,569)	-8%	20,472	2,519	14%
Apr	20,943	(3,657)	-15%	22,284	1,341	6%	15,736	(6,548)	-29%
May	18,190	(5,260)	-22%	20,103	1,913	11%	14,284	(5,819)	-29%
Jun	20,962	(3,268)	-13%	21,093	131	1%	15,822	(5,271)	-25%
Jul	19,722	(3,514)	-15%	20,099	377	2%	15,452	(4,647)	-23%
Aug	19,174	(2,017)	-10%	20,197	1,023	5%	19,649	(548)	-3%
Sep	17,448	(3,311)	-16%	19,904	2,456	14%	15,981	(3,923)	-20%
Oct	17,088	(3,667)	-18%	18,741	1,653	10%	16,609	(2,132)	-11%
Nov	14,992	(687)	-4%	15,980	988	7%	13,199	(2,781)	-17%
Dec	13,797	(1,525)	-10%	14,591	794	6%	12,058	(2,533)	-17%
Total	215,827	(41,450)	-16%	223,824	7,997	4%	190,987	(32,837)	-15%

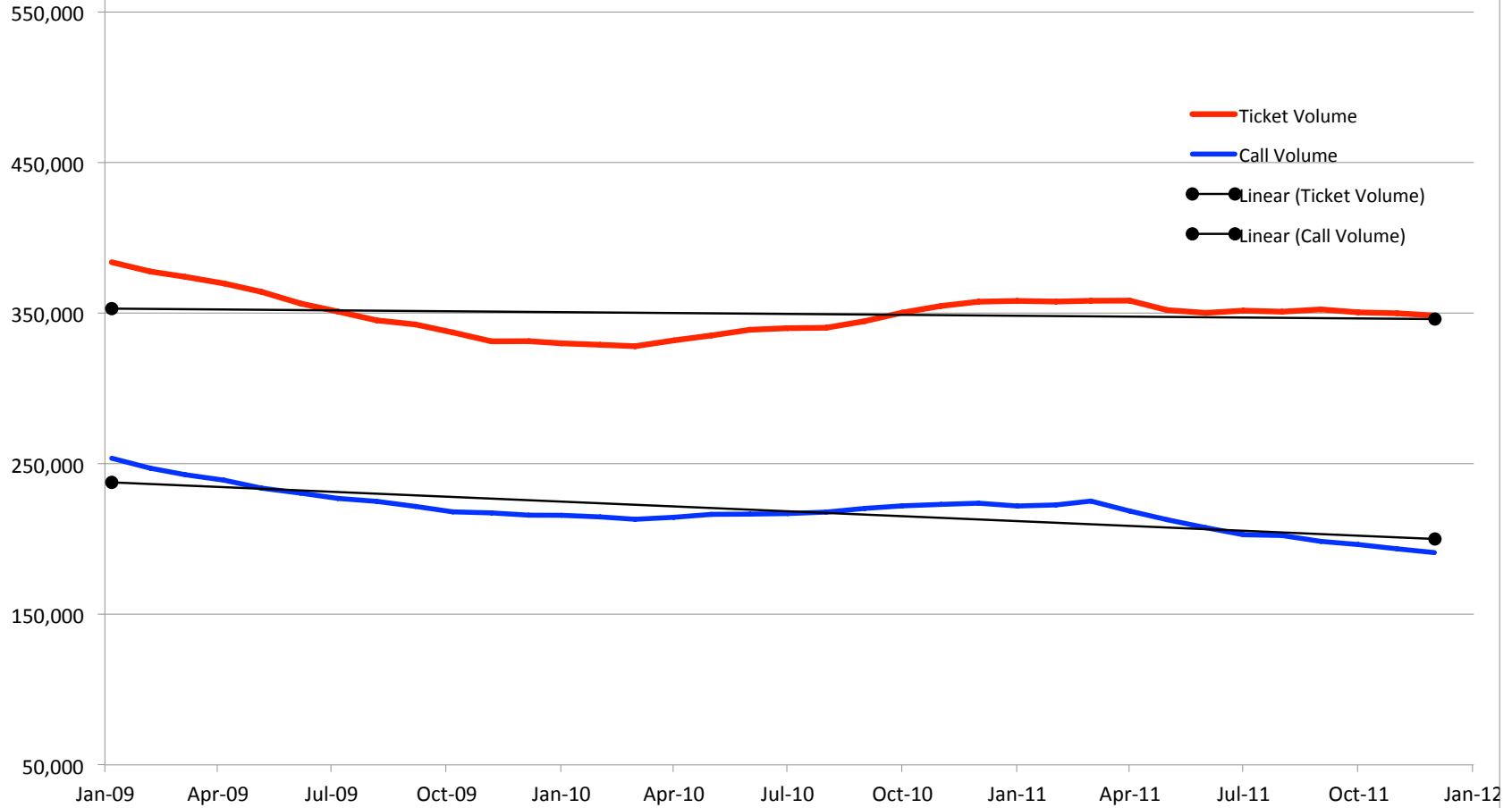
Call Volume Comparison 2008-2011



Call Volume 12 Month Moving Totals



12 Month Moving Total
Call Volume compared to Ticket Volume



MEMBER	Jan-11	Feb-11	Mar-11	Apr-11	May-11	Jun-11	Jul-11	Aug-11	Sep-11	Oct-11	Nov-11	Dec-11	2011 YTD
TOTAL	189,024	204,941	259,322	218,542	225,646	261,783	235,538	267,379	226,954	221,649	188,296	176,474	2,675,548
ACCESS FIBER GROUP, INC	89	76	62	156	168	187	171	178	212	188	154	114	1,755
AIR PRODUCTS & CHEMICALS - 01	204	144	140	139	119	108	140	228	76	72	112	64	1,546
ALABAMA DEPARTMENT OF TRANSPORTATION	606	657	839	718	804	1,051	851	763	658	729	596	538	8,810
ALABAMA GAS													-
ANNISTON	394	452	602	351	333	416	437	509	497	503	439	472	5,425
BIRMINGHAM	3,904	4,310	5,370	4,606	5,113	5,688	5,208	5,970	5,158	4,987	4,552	4,027	58,673
GADSDEN	264	254	274	317	330	364	306	396	383	414	325	302	3,929
HIGH						101	112	169	142	115	98	121	858
JASPER	124	264	172	144	128	148	153	177	151	270	108	90	1,929
MARION	81	164	115	68	123	159	145	130	115	109	75	75	1,359
MONTGOMERY	1,979	2,179	2,413	2,023	1,800	2,305	1,912	2,088	1,830	1,720	1,586	1,428	23,263
OPELIKA	1,034	765	2,070	1,358	760	843	1,009	1,054	1,033	908	974	974	12,782
PHENIX CITY	379	440	486	376	450	570	458	627	496	498	423	373	5,576
ROGERSVILLE	89	120	151	119	199	161	124	171	163	141	98	73	1,609
SELMA	114	124	165	102	158	174	137	216	171	176	165	159	1,861
ST CLAIR	319	330	500	417	417	498	434	539	421	431	398	302	5,006
TALLADEGA	139	148	115	134	77	157	101	158	97	125	119	115	1,485
TUSCALOOSA	923	859	1,139	1,034	1,491	1,744	1,739	1,700	1,448	1,368	1,067	1,108	15,620
TUSKEGEE	74	59	87	77	111	120	119	112	109	91	60	47	1,066
ALABAMA POWER													
BIRMINGHAM DIV. - APC1CL	4,920	5,159	6,365	5,457	6,041	6,716	6,142	7,112	6,005	6,022	5,125	4,783	69,847
APC1SH	56	38	42	44	52	93	50	52	52	61	46	41	627
EASTERN DIV. - APC2CL	1,859	2,102	2,690	2,119	2,026	2,477	2,214	2,567	2,229	2,169	1,941	1,775	26,168
SOUTHERN DIV. - APC3CL	3,846	3,756	5,446	4,285	3,584	4,239	3,858	4,440	3,886	3,692	3,506	3,183	47,721
WESTERN DIV. - APC4CL	1,957	2,120	2,523	2,084	2,645	3,097	3,045	3,215	2,696	2,765	1,934	2,080	30,161
MOBILE DIV. - APC5CL	2,603	2,581	3,285	2,787	2,879	3,117	2,677	3,324	2,911	2,765	2,247	2,012	33,188
SOUTHEAST DIV. - APC6CL	1,292	1,398	1,494	1,468	1,345	1,555	1,276	1,667	1,311	1,413	1,221	1,107	16,547
FORT RUCKER	145	147	245	196	189	451	249	403	332	331	314	281	3,283
APC9IT	76	65	75	84	108	92	101	111	75	79	63	56	985
ALABAMA UTILITY SERVICES, LLC	80	60	89	5	0	0	0	0	0	0	0	0	234
ALABAMA UTILITY SERVICES, LLC 02	68	55	89	5	0	0	0	0	0	0	0	0	217
ALABAMA WASTEWATER SYSTEMS, LLC	27	32	28	30	20	46	35	35	25	31	54	13	376
ALABASTER WATER BOARD	163	124	215	158	184	216	169	149	128	149	157	110	1,922
ALABASTER WATER BOARD - E	23	18	23	15	15	31	19	21	23	15	23	9	235
ALATENN PIPELINE COMPANY	46	38	50	34	30	37	35	65	27	31	22	16	431
ALEXANDER CITY, CITY OF	101	93	117	91	153	119	130	153	144	145	89	77	1,412
ALBERTVILLE MUNICIPAL UTILITIES BOARD	65	46	82	72	61	96	94	67	69	58	56	47	813
AMERICAN MIDSTREAM	308	298	361	374	400	548	437	544	375	396	288	217	4,546
AMERICAN WATER	147	144	240	207	199	472	267	422	331	347	316	279	3,371
ANNISTON WATER WORKS AND SEWER BOARD	268	256	423	250	183	253	231	312	314	324	320	352	3,486
ARDMORE TELEPHONE	180	207	296	280	222	325	353	398	343	330	247	377	3,558
ARLINGTON PROPERTIES	1	3	3	23	18	21	20	33	21	5	1	2	151
ASHTON PLACE APARTMENTS	8	11	4	14	14	7	7	7	2	15	38	9	136
A T & T	1,759	1,682	1,702	1,519	1,707	2,050	1,839	1,920	1,606	1,592	1,406	1,266	20,048
A T & T													-
BIRMINGHAM 01	5,155	5,585	6,779	5,720	6,288	7,010	6,427	7,321	6,154	6,269	5,224	5,059	72,991
DECATUR 01	5,294	6,276	7,951	6,812	7,526	8,920	7,964	8,695	7,105	6,884	6,013	5,543	84,983
MOBILE	3,187	3,189	3,952	3,351	3,561	3,894	3,347	3,610	3,217	3,209	2,724	2,544	39,785
MONTGOMERY 01	5,032	5,179	7,131	5,574	4,921	5,819	5,235	5,872	5,090	4,828	4,420	4,135	63,236
MONTGOMERY 02	1,914	1,781	2,270	1,947	2,435	2,870	2,771	2,912	2,388	2,292	1,778	1,736	27,094
PENSACOLA	0	0	0	0	0	0	0	0	0	0	0	0	-
ATHENS, CITY OF	574	664	810	732	799	1,088	994	1,058	833	849	628	596	9,625
ATMORE, CITY OF	76	63	74	94	49	83	91	92	85	81	51	40	879
ATMOS ENERGY	0	2	3	0	0	0	0	0	0	0	0	0	5
AUBURN WATER WORKS	773	514	1,680	1,008	532	536	672	776	499	484	484	466	8,424
BAKERHILL WATER AUTHORITY	40	30	41	25	25	32	27	40	16	18	12	7	313
BALDWIN COUNTY COMMISSION	87	85	129	104	109	133	105	101	112	135	80	64	1,244
BALDWIN COUNTY EMC	741	742	936	878	811	905	839	917	867	784	697	655	9,772
BALDWIN COUNTY SEWER SERVICE, LLC	424	442	566	442	462	505	419	541	434	395	333	365	5,328
BALDWIN COUNTY SEWER SERVICE, LLC - E	6	8	16	16	8	18	3	10	10	20	3	10	128
BAY GAS STORAGE COMPANY, LTD.	39	46	58	54	60	69	35	38	71	196	148	72	886
BAYOU LA BATRE UTILITIES	49	64	93	90	111	92	48	61	66	79	42	33	828
BCI/DSSI SERVICES LLC	92	95	127	139	111	120	125	136	104	106	123	97	1,375
BCI - CONNEXION - OPELIKA	5	5	13	11	12	16	20	11	133	10	10	10	256
BEAUREGARD WATER AUTHORITY	91	80	76	61	70	92	60	73	104	86	50	48	891
BELFOREST WATER SYSTEM	99	128	147	111	145	128	119	172	97	80	95	91	1,412
BERRY, TOWN OF	24	10	28	18	18	27	17	33	28	21	32	29	285
BERRY HOUSING AUTHORITY	1	0	1	2	2	4	1	11	13	7	0	1	43
BIOFLOW - RUSSELL LANDS, INC.	5	4	12	15	18	18	10	9	8	6	9	12	126
BIRMINGHAM WTR WORKS & SWR BRD	3,671	4,044	4,734	4,051	4,497	5,101	4,533	5,169	4,456	4,584	3,833	3,571	52,244
BISHOP PETROLEUM	6	10	17	14	12	6	7	28	29	25	20	15	189
BLACK BELT ENERGY				2	12	0	3	6	4	3	9	0	39
BLACK BOX NETWORK SVCS, INC. - GOVERNMENTAL SOLUTIONS	65	51	72	74	55	63	26	44	37	51	41	31	610

MEMBER	Jan-11	Feb-11	Mar-11	Apr-11	May-11	Jun-11	Jul-11	Aug-11	Sep-11	Oct-11	Nov-11	Dec-11	2011 YTD	
BLACK WARRIOR ELECTRIC MEMBERSHIP CORPORATION		2	4	3	2	2	8	3	5	5	7	1	2	44
BLACK WARRIOR METHANE CORP.		4	8	15	5	3	4	3	11	9	7	4	7	80
BLOUNT COUNTY WATER AUTHORITY												20	27	47
BOAZ GAS BOARD		55	89	88	86	57	74	101	98	86	116	116	98	1,064
BOAZ WATER AND SEWER BOARD		33	34	50	42	33	44	62	56	47	58	64	69	592
BOSTON, HOUSING AUTHORITY OF		2	0	0	2	5	1	0	0	1	3	0	1	15
BP PRODUCTS PIPELINE NORTH AMERICA		21	11	16	15	25	27	28	36	26	20	18	22	265
BP PRODUCTS PIPELINE NORTH AMERICA - 02		5	3	0	6	7	2	3	2	4	7	1	6	46
BP PRODUCTS PIPELINE NORTH AMERICA - BHAM		18	77	30	16	6	6	20	12	2	6	0	0	193
BP PRODUCTS PIPELINE NORTH AMERICA - MONTGOMERY		0	1	0	2	0	0	0	0	1	0	0	0	4
BP PRODUCTS PIPELINE NORTH AMERICA - MOBILE		5	2	2	1	1	2	1	8	3	5	2	1	33
BRENT, CITY OF UTILITIES BOARD		36	64	58	84	94	96	90	98	74	72	142	136	1,044
BREWTON, CITY OF		59	95	112	79	75	78	71	119	88	79	72	62	989
BRIDGEPORT UTILITIES		13	16	28	18	38	14	70	35	14	21	16	11	294
BRIGHT HOUSE NETWORKS - BIRMINGHAM		905	948	1,237	1,087	1,244	1,383	1,184	1,398	1,314	1,090	1,010	945	13,745
BRIGHT HOUSE NETWORKS 02 - WETUMPKA		55	84	82	69	73	82	68	118	60	59	51	56	857
BRIGHT HOUSE NETWORKS 03 - EUFAULA		585	721	944	761	585	763	634	824	729	868	703	581	8,698
BRINDLEE MOUNTAIN TELEPHONE CO.		69	63	112	100	69	97	60	93	68	50	62	55	898
BROOKSIDE, TOWN OF		25	30	31	33	17	18	18	12	16	13	7	5	225
BUCKEYE PARTNERS, LP											10	43	11	64
BUTLER, TOWN OF UTILITIES BOARD		12	8	15	10	19	17	12	31	20	15	12	12	183
CABLE ALABAMA		1,459	1,858	2,286	1,918	2,020	2,423	2,275	2,575	2,076	2,015	1,820	1,709	24,434
CABLE ALABAMA - 02 (PCL)		527	624	807	638	662	826	762	893	783	759	588	495	8,364
CABLE ALABAMA - E		88	112	82	67	122	66	20	63	0	0	0	0	620
CABLE OPTIONS		22	17	19	13	19	21	22	24	8	9	17	11	202
CABLE ONE		72	72	88	51	67	78	74	137	140	139	162	142	1,222
CALERA WATER & GAS BOARD		163	127	170	187	166	143	131	149	159	121	101	77	1,694
CAMELLIA COMMUNICATIONS		75	91	144	132	90	124	79	128	87	154	111	61	1,276
CAMELLIA COMMUNICATIONS - E		0	0	0	0	0	0	0	0	0	0	0	0	-
CAMP HILL, TOWN OF		6	7	6	4	7	6	9	16	9	13	13	12	108
CANOE WATER AND FIRE PROTECTION AUTHORITY		20	21	17	20	7	19	8	10	8	13	11	5	159
CARBON HILL HOUSING AUTHORITY		0	0	0	0	1	0	0	0	0	4	0	0	5
CARBON HILL UTILITIES BOARD		28	11	40	21	14	30	13	39	25	28	20	73	342
CARROLL'S CREEK WATER AUTHORITY		116	90	128	127	104	114	125	146	163	111	115	116	1,455
CAVE SPRING, CITY OF		15	1	0	4	3	11	11	4	10	9	3	4	75
CENTRAL AL ELECTRIC CO-OP 01		332	347	345	181	187	230	224	264	174	180	160	160	2,784
CENTRAL AL ELECTRIC CO-OP 01 - E		14	14	6	10	8	22	9	23	18	10	6	11	151
CENTRAL AL ELECTRIC CO-OP 02		68	72	104	94	132	133	87	133	119	80	78	53	1,153
CENTRAL AL ELECTRIC CO-OP 02 - E		2	3	2	4	9	10	10	11	12	4	2	2	71
CENTRAL AL ELECTRIC CO-OP 03		19	54	59	50	48	44	34	38	17	31	31	16	441
CENTRAL AL ELECTRIC CO-OP 03 - E		1	0	0	0	3	0	0	1	0	0	5	1	11
CENTRAL AL ELECTRIC CO-OP 04		223	273	275	232	188	226	245	287	242	234	205	149	2,779
CENTRAL AL ELECTRIC CO-OP 04-E		12	10	14	13	6	8	18	23	19	18	8	10	159
CENTRAL TALLADEGA COUNTY WATER DISTRICT		29	40	60	36	21	22	30	51	17	21	15	8	350
CENTRAL WATER WORKS, INC.		28	15	23	11	22	13	13	22	28	22	25	19	241
CENTREVILLE WATER WORKS & SEWER BOARD		41	28	23	30	95	38	44	51	36	45	18	37	486
CENTURYTEL OF ALABAMA		2,344	2,665	3,407	2,952	2,834	3,593	3,198	3,523	3,111	3,202	2,651	2,720	36,200
CHARTER COMMUNICATIONS OF ALABAMA		12,653	13,473	17,101	14,155	14,122	16,476	14,941	16,229	14,253	13,872	11,749	11,238	170,262
CHARTER COMMUNICATIONS - LANETT		122	143	141	94	112	185	125	136	110	117	127	119	1,531
CHEROKEE WATER AND GAS DEPARTMENT		1	0	1	4	0	3	0	5	1	4	1	0	20
CHEVRON PIPELINE COMPANY		5	4	1	3	6	0	1	3	1	3	0	1	28
CHEVRON U.S.A. INC.		1	3	3	4	4	2	0	4	2	3	1	0	27
CHEVRON U.S.A. INC. - E		0	1	0	0	0	0	0	0	0	0	0	0	1
CHILDERSBURG WTR, SWR, & GAS BD		140	143	205	178	117	129	126	157	84	133	89	77	1,578
CHILTON WATER AUTHORITY		103	114	139	145	160	156	142	164	132	111	123	78	1,567
CLARKE-MOBILE COUNTIES GAS DISTRICT		289	286	371	378	306	366	313	351	316	387	269	230	3,862
CLARKE-MOBILE COUNTIES GAS DISTRICT - E		0	0	10	0	0	0	11	0	0	0	12	8	41
CLAYTON HOUSING AUTHORITY		1	2	0	2	2	1	1	0	0	0	1	1	11
CLEBURNE COUNTY WATER AUTHORITY		124	128	147	120	79	79	107	109	126	95	50	58	1,222
CLEBURNE COUNTY WATER AUTHORITY - E		0	0	0	0	0	0	0	0	0	0	0	0	-
CLS, INC.		15,234	14,941	18,991	15,517	16,110	6,924							87,717
CLS, INC. 03		261	292	451	319	253	24	0						1,600
COLONIAL PIPELINE		199	219	264	193	193	272	270	348	335	228	205	210	2,936
COLONIAL PIPELINE - 02		18	17	28	16	26	39	37	53	85	37	41	51	448
COLONIAL PIPELINE - 03		24	7	11	26	20	24	9	22	13	15	7	15	193
COLUMBIA SQUARE APARTMENTS		6	15	2	10	6	2	7	13	16	11	2	3	93
COLUMBIANA GAS		22	11	16	20	22	19	27	17	21	16	9	7	207
COLUMBIANA WATER BOARD		38	28	41	47	51	38	72	59	40	47	30	27	518
COMCAST CABLEVISION OF GADSDEN		253	267	274	322	331	339	290	356	352	381	335	282	3,782
COMCAST CABLE-HUNTSVILLE		1,110	1,448	1,718	1,329	1,375	1,601	1,437	1,743	1,288	1,313	1,177	1,004	16,543
COMCAST CABLE - HUNTSVILLE - E		0	0	0	0	0	0	0	0	0	0	0	0	-
COMCAST CABLE-MOBILE		1,095	1,084	1,391	1,104	1,163	1,236	1,064	1,226	1,016	753	847	739	12,718
COMCAST CABLEVISION OF THE SHOALS		530	700	841	797	865	963	849	914	789	1,004	585	547	9,384
COMCAST CABLE-TUSC.		658	596	906	841	1,280	1,538	1,470	1,343	1,151	1,040	760	499	12,082
COM-LINK, INC.		38	33	50	49	78	80	62	76	73	72	64	36	711
CONSOLIDATED UTILITY SERVICES		19,177	23,383	29,695	24,984	25,571	30,113	27,038	29,729	24,512	24,112	20,231	18,833	297,378

MEMBER	Jan-11	Feb-11	Mar-11	Apr-11	May-11	Jun-11	Jul-11	Aug-11	Sep-11	Oct-11	Nov-11	Dec-11	2011 YTD	
MEMBER														
CONSOLIDATED UTILITY SERVICES -02	20,461		21,870	27,924	23,283	24,491	28,351	25,603	28,203	23,791	23,270	20,018	18,853	286,118
COOSA VALLEY ELECTRIC COOPERATIVE, INC.	134	191	227	167	133	184	167	107	217	155	158	143	129	2,005
CORDOVA WATER AND GAS	0	5	6	4	8	5	10	17	26	9	6	6	6	102
CORDOVA WATER AND GAS - E	0	0	0	0	0	0	0	0	0	0	0	0	0	-
COTTONWOOD HOUSING AUTHORITY	2	2	0	2	0	1	4	2	2	5	3	2	2	25
COVINGTON ELECTRIC COOPERATIVE	118	140	166	164	152	165	178	158	169	141	118	145	145	1,814
CULLMAN ELECTRIC CO-OP	451	522	639	476	663	766	622	758	607	478	334	422	422	6,738
CULLMAN-JEFFERSON	974	1,046	1,352	1,080	1,446	1,890	1,408	1,622	1,458	1,364	968	1,053	1,053	15,661
CULLMAN WATER	144	175	268	151	251	373	233	268	245	234	138	158	158	2,638
DADEVILLE HOUSING AUTHORITY	3	8	3	3	3	3	6	46	59	49	29	55	55	267
DADEVILLE WATER SUPPLY & GAS BD	28	29	50	18	35	35	33	75	78	69	55	69	69	574
DAPHNE, CITY OF	802	886	896	818	844	995	880	944	780	784	698	686	686	10,013
DAUPHIN ISLAND GATHERING	6	4	1	2	6	1	1	3	0	3	4	1	1	32
DCP MIDSTREAM, LLC	0	0	0	1	0	0	0	0	0	0	0	0	0	1
DECATUR HOUSING AUTHORITY	9	17	12	7	6	6	13	6	9	5	10	5	5	105
DECATUR UTILITIES	672	772	1,008	754	728	938	820	1,008	968	792	726	556	556	9,742
DeKALB-CHEROKEE CO.	156	165	180	167	164	216	171	255	186	223	190	194	194	2,267
DEMOPOLIS CATV CO	15	80	36	23	26	79	72	52	44	52	60	24	24	563
DEMOPOLIS WATER WORKS & SEWER BOARD	19	93	47	31	33	53	50	39	25	30	34	15	15	469
DENBURY ONSHORE, LLC	22	29	35	28	24	53	29	27	27	49	12	7	7	342
DIVERSE POWER	7	11	12	8	12	10	9	9	4	4	4	5	5	95
DIXIE ELECTRIC COOPERATIVE	473	540	701	658	548	700	675	594	632	599	545	518	518	7,183
DIXIE PIPELINE-01	230	83	93	107	156	7	145	173	131	110	97	86	86	1,418
DIXIE PIPELINE-02	9	4	11	9	6	7	7	13	9	11	5	0	0	91
DIXIE PIPELINE-03	5	8	6	10	6	7	1	2	3	10	3	5	5	66
DORA UTILITIES	17	21	33	31	7	13	34	28	13	25	11	11	11	244
DOUGLAS PIPELINE	0	0	0	0	0	0	1	4	0	0	1	0	0	6
DOUGLAS WATER AUTHORITY		70	84	72	79	90	91	79	102	72	60	56	56	855
DUKENET COMMUNICATIONS									69	110	84	95	95	358
EAST ALABAMA WATER DISTRICT	191	174	177	154	152	215	184	226	160	207	164	150	150	2,154
EAST CENTRAL BALDWIN WATER AUTHORITY	72	58	64	61	69	60	66	70	74	87	62	68	68	811
EAST CENTRAL BALDWIN WATER AUTHORITY - E	0	0	0	0	0	0	0	0	0	0	0	0	0	-
EAST CENTRAL GAS	46	43	129	83	63	77	53	76	60	49	39	35	35	753
EAST CULLMAN WATER SYSTEM, INC.	45	48	64	52	86	117	57	103	75	58	45	58	58	808
EL PASO PRODUCTION COMPANY	14	15	18	14	19	15	9	14	18	19	2	7	7	164
ENBRIDGE PIPELINES (ALABAMA GATHERING), INC.	10	24	38	58	36	82	56	78	48	54	58	116	116	658
ENBRIDGE PIPELINES (ALABAMA INTRASTATE), INC.	71	102	92	140	174	170	138	186	152	120	172	194	194	1,711
ENERGEN RESOURCES - OAK GROVE	50	48	74	40	150	172	298	490	260	104	48	36	36	1,770
ENERGEN RESOURCES - VANCE	210	160	128	104	130	162	144	208	136	126	150	160	160	1,818
ENGLEWOOD HULLS WATER SYSTEM	70	73	51	51	54	39	47	69	64	72	44	41	41	675
ENTERPRISE PRODUCTS OPERATING, LLC	81	65	61	59	65	97	88	104	93	71	94	96	96	974
ENTERPRISE PRODUCTS OPERATING L.P.	33	32	36	67	27	45	44	67	49	60	52	41	41	553
ESCAMBIA OPERATING COMPANY, LLC	20	10	21	14	15	8	14	27	27	24	21	13	13	214
ENVIRO-SYSTEMS, LLC	23	30	33	26	30	11	28	15	17	14	22	17	17	266
EUFAULA WATER WORKS & SEWER BD	48	77	77	69	74	72	63	111	53	59	50	51	51	804
EXXON COMPANY, U.S.A. - Mobile Bay	0	1	2	1	4	0	3	5	7	3	0	5	5	31
FAIRHOPE UTILITIES	541	488	606	531	601	739	607	668	573	589	504	483	483	6,930
FALKVILLE, TOWN OF	5	6	3	6	6	6	14	16	18	20	13	7	7	120
FARMERS TELEPHONE CO-OP, INC.	31	24	95	83	55	286	114	105	82	111	78	106	106	1,170
FAYETTE GAS	11	20	19	14	9	16	17	23	22	41	53	60	60	305
FAYETTE GAS - E	0	0	0	0	0	0	0	0	0	0	0	0	0	-
FAYETTEVILLE WATER SYSTEM	17	15	28	45	15	40	19	24	24	16	18	12	12	273
FIBERLINGS LLC	53	34	57	71	86	117	66	33	1	0	0	0	0	518
FLOMATON, TOWN OF	7	23	32	18	23	13	19	43	48	43	41	31	31	341
FLORALA GAS DEPARTMENT	9	15	9	9	10	6	4	11	6	50	6	3	3	138
FLORIDA GAS 01	51	51	55	52	56	77	36	42	40	61	32	36	36	589
FLORIDA GAS 02	54	77	89	63	61	70	63	117	95	99	90	71	71	949
FLORENCE HOUSING AUTHORITY	13	17	19	23	5	18	5	21	13	9	9	10	10	162
FLORENCE ELECTRICITY DEPARTMENT	387	581	691	616	741	729	621	764	682	615	474	409	409	7,310
FLORENCE WATER & SEWER DPT	247	415	476	433	460	494	367	495	454	390	323	284	284	4,838
FLORENCE STORM SEWER DEPARTMENT	191	312	318	312	298	326	228	322	305	236	217	194	194	3,259
FLORENCE NATURAL GAS DEPARTMENT	247	399	460	434	457	480	394	504	455	419	307	287	287	4,843
FORT PAYNE WATER WORKS									40	61	62	74	74	237
FORT RUCKER/REMTECH SERVICES	44	45	88	69	87	81	60	123	109	72	61	59	59	898
FOUR STAR OIL & GAS	7	5	11	8	8	7	7	10	14	7	9	3	3	96
FOUR STAR OIL & GAS - E	0	0	0	0	0	0	0	1	0	0	0	0	0	1
FREEBIRD GAS STORAGE	1	2	1	0	0	0	1	0	2	0	0	0	0	7
FREEMANVILLE WATER SYSTEM, INC.	17	15	21	29	24	36	41	43	26	25	18	14	14	309
FRONTIER COMMUNICATIONS OF ALABAMA	165	152	143	90	106	98	89	133	153	174	90	72	72	1,465
FRONTIER COMMUNICATIONS OF LAMAR CO.	11	27	31	27	21	42	45	46	66	31	34	24	24	405
FRONTIER COMMUNICATIONS OF THE SOUTH	115	95	120	114	93	106	125	125	114	117	77	55	55	1,256
FULTONDALE GAS	245	229	288	236	234	337	207	224	208	291	243	296	296	3,038
GENESIS CRUDE OIL, L.P.	153	315	234	234	342	279	162	207	216	243	162	227	227	2,774
GENEVA COUNTY GAS DISTRICT	19	24	26	26	20	27	27	49	33	39	28	65	65	383
GEOMET	21	31	17	19	43	24	18	28	23	21	7	14	14	266
GEORGIANA HOUSING AUTHORITY	2	0	3	0	0	0	3	1	2	0	1	0	0	12

MEMBER	Jan-11	Feb-11	Mar-11	Apr-11	May-11	Jun-11	Jul-11	Aug-11	Sep-11	Oct-11	Nov-11	Dec-11	2011 YTD	
GORDO, TOWN OF		13	12	13	10	4	7	2	14	5	12	4	13	109
GRAND BAY WATER WORKS, INC.		45	59	67	79	103	113	85	100	82	76	46	39	894
GRANGER ENERGY OF DECATUR LLC		2	2	2	4	2	1	2	3	0	5	3	0	26
GRAYSVILLE UTILITIES		87	88	92	89	165	174	141	161	122	123	96	56	1,394
GREATER GADSDEN HOUSING AUTHORITY		54	51	39	95	124	93	22	62	43	53	47	40	723
GREEHILL WATER & FIRE PROTECTION AUTHORITY		15	27	33	16	47	42	33	36	42	28	22	8	349
GTC, INC.		14	26	12	24	20	10	10	16	16	61	15	6	230
GUIN HOUSING AUTHORITY		1	2	5	2	2	5	16	3	5	3	0	5	49
GULF ATLANTIC OPERATIONS, LLC		4	3	12	18	24	16	20	24	15	28	3	0	167
GULF ATLANTIC OPERATIONS, LLC - E		0	1	4	6	8	1	1	1	5	3	1	0	31
GULF COAST MINERALS, LLC		24	16	19	20	33	25	16	31	26	22	17	13	262
GULF SHORES, UTILITIES BOARD OF THE CITY OF		94	82	159	193	113	117	135	169	117	103	116	106	1,504
GULF SOUTH PIPELINE		265	300	423	366	361	410	316	530	427	410	273	293	4,374
GULF SOUTH PIPELINE 02		31	33	58	43	44	31	44	65	65	48	45	45	552
GULF SOUTH PIPELINE 03		9	12	15	0	21	9	0	0	2	3	3	0	74
GULF TELEPHONE CO.	1,066	1,152	1,496	1,344	1,146	1,365	1,253	1,382	1,346	1,220	1,073	979	14,822	
GULFSAFE		16	22	16	10	44	36	34	38	42	16	22	16	312
GULFSTREAM NATURAL GAS SYSTEM, LLC		3	3	3	5	10	4	2	4	2	4	4	1	45
GULFSTREAM NATURAL GAS SYSTEM, LLC - E		0	0	0	0	0	0	0	0	0	0	0	0	-
GUNTERSVILLE WATER BOARD		40	58	88	67	66	154	83	98	60	62	55	35	866
HACKLEBURG HOUSING AUTHORITY		10	10	9	6	31	44	42	28	27	31	16	25	279
HALEYVILLE HOUSING AUTHORITY		29	7	4	3	6	3	6	13	6	9	3	5	94
HAMILTON, HOUSING AUTHORITY OF		7	4	35	15	2	7	12	17	15	17	14	3	148
HANCEVILLE HOUSING AUTHORITY		17	10	17	17	44	39	32	45	20	23	12	21	297
HANCEVILLE HOUSING AUTHORITY - E		0	0	0	0	0	0	0	0	0	0	0	0	-
HARBOR COMMUNICATIONS	144	165	217	177	182	221	194	175	183	211	154	123	2,146	
HARTSELLE UTILITIES	99	133	161	140	132	136	112	165	108	109	110	109	1,514	
HARVEST MONROVIA WATER SYSTEM	298	344	433	470	675	757	750	741	544	440	350	358	6,160	
HAYNEVILLE TELEPHONE COMPANY, INC.	54	52	52	38	108	60	78	52	88	94	72	242	990	
HAYNEVILLE TELEPHONE COMPANY, INC. - E	0	3	0	2	0	0	1	0	0	3	0	2	11	
HIGHMOUNT EXPLORATION AND PRODUCTION	62	40	40	35	45	38	31	46	44	70	32	35	518	
HILCORP ENERGY COMPANY	4	3	1	1	1	0	0	1	0	2	2	0	15	
HOOVER, CITY OF	190	147	216	138	117	194	205	132	174	177	151	130	1,971	
HUGULEY WATER AND FIRE PROTECTION	20	21	24	23	22	22	22	32	27	42	66	46	367	
HUNT REFINING CO.	60	63	40	52	49	41	44	67	52	52	37	34	591	
HUNTSVILLE, CITY OF - LANDSCAPE MANAGEMENT	297	358	458	310	267	329	258	360	227	264	242	241	3,611	
HUNTSVILLE, CITY OF - WATER POLLUTION CONTROL	10	9	10	23	23	15	16	11	12	12	12	15	168	
HUNTSVILLE HOUSING AUTHORITY	156	210	256	188	130	172	107	156	105	136	136	103	1,855	
HUNTSVILLE UTILITIES - RECEIVER	1,887	2,427	3,017	2,460	2,682	3,291	3,017	3,594	2,857	2,658	2,304	2,101	32,295	
HUNTSVILLE UTILITIES - ELECTRIC DEPARTMENT	1,762	2,087	2,711	2,303	2,454	2,988	2,852	3,274	2,617	2,412	2,076	1,707	29,243	
HUNTSVILLE UTILITIES - ELECTRIC DEPARTMENT - E	106	128	109	97	181	119	113	144	103	112	88	175	1,475	
HUNTSVILLE UTILITIES - GAS DEPARTMENT	1,521	1,891	2,388	1,970	2,093	2,514	2,272	2,660	2,033	1,960	1,708	1,497	24,507	
HUNTSVILLE UTILITIES - FIBER	49	81	109	66	37	47	33	40	32	1	35	24	554	
HUNTSVILLE UTILITIES - WATER DEPARTMENT	1,199	1,472	1,835	1,443	1,460	1,666	1,588	1,798	1,365	1,456	1,305	1,133	17,720	
ICG TELECOM GROUP, INC.	591	571	730	621	593								3,106	
INTEGRA WATER, LLC - MADISON	35	70	64	48	50	43	46	60	46	44	36	14	556	
INTEGRA WATER, LLC - VINEMONT							0	4	10	14	2	2	32	
INTEGRA WATER, LLC - CREOLA							4	28	28	34	32	20	146	
INTEGRA WATER, LLC - LEE								6	0	0	0	6	12	
INTERSTATE FIBERNET	311	331	251	384	390	461	396	397	298	363	268	284	4,134	
INTERSTATE TELEPHONE COMPANY	146	152	149	125	113	150	129	141	128	158	203	179	1,773	
JABSCO OIL OPERATING, LLC	6	2	1	0	0	10	7	5	4	4	0	10	49	
JACKSONVILLE GAS	36	64	48	52	78	76	61	80	58	38	71	66	728	
JEMISON WATER DEPARTMENT	12	20	23	25	34	40	32	36	24	25	18	15	304	
JENKINS BRICK COMPANY	4	8	7	8	3	8	4	5	4	2	1	1	55	
JENKINS BRICK COMPANY 02	30	20	22	14	18	23	43	27	18	15	26	14	270	
JOE WHEELER EMC	411	540	610	713	660	702	567	709	573	580	490	384	6,939	
KENTUCKY DATA LINK, INC	84	87	107	111	158	295	226	334	270	264	206	162	2,304	
KINDER MORGAN	2	4	3	0	7	3	0	0	2	1	0	0	22	
KNOLOGY - GA	73	63	59	356	348	380	360	380	782	702	828	862	5,193	
KNOLOGY OF MONTGOMERY	2,145	2,291	2,550	2,165	1,882	2,404	1,985	2,133	1,892	1,842	1,769	1,569	24,627	
LAFAYETTE GAS	22	30	33	21	25	34	37	17	21	14	23	23	300	
LAMAR COUNTY GAS	20	36	35	24	33	36	31	48	61	37	33	15	409	
LAMAR COUNTY WATER AND FIRE PROTECTION AUTH	37	54	56	55	64	82	81	122	106	60	41	23	781	
LANETT, CITY OF	20	22	12	14	14	20	14	26	44	50	62	58	356	
LANETT HOUSING AUTHORITY	9	11	6	6	7	9	7	11	22	25	31	29	173	
LEMOYNE WATER SYSTEM, INC.	15	9	14	32	14	16	17	23	15	26	20	14	215	
LEVEL 3 COMMUNICATIONS	777	760	808	805	861	877	807	1,184	898	864	738	709	10,088	
CENTURYTEL SOLUTIONS 01	217	217	126	213	180	184	212	238	149	129	171	143	2,140	
CENTURYTEL SOLUTIONS 02	83	75	60	106	73	84	51	60	73	85	49	43	842	
LIGHTWAVE TECHNOLOGIES, L.L.C.	105	206	256	244	248	226	169	188	206	260	109	189	2,406	
LIGHTWAVE TECHNOLOGIES, L.L.C. 02	49	86	126	116	106	164	117	116	97	116	151	90	1,334	
LIGHTWAVE TECHNOLOGIES, L.L.C. 03	148	326	344	331	298	274	255	309	326	352	301	350	3,614	
LIGHTWAVE TECHNOLOGIES, L.L.C. 01-E	0	0	0	0	0	0	0	0	0	0	0	0	-	
LIGHTWAVE TECHNOLOGIES, L.L.C. 03 - E	0	0	0	0	0	0	0	0	0	0	0	0	-	
LINCOLN, CITY OF	50	86	63	49	38	65	61	75	42	66	41	47	683	

MEMBER	Jan-11	Feb-11	Mar-11	Apr-11	May-11	Jun-11	Jul-11	Aug-11	Sep-11	Oct-11	Nov-11	Dec-11	2011 YTD	
LINDE GAS, INC.		44	26	34	30	27	42	40	48	31	31	27	27	407
LINDE, LLC		7	12	23	9	13	9	10	25	9	9	14	9	149
LINDEN, CITY OF		13	9	29	28	58	70	62	40	36	30	10	18	403
LINDSEY COMMUNICATIONS		5	4	9	7	11	10	6	10	9	1	4	6	82
LINEVILLE HOUSING AUTHORITY		12	5	24	19	9	14	9	9	12	11	20	15	159
LINEVILLE WATER AND SEWER		9	9	31	34	21	18	8	15	17	9	13	9	193
LIVINGSTON, CITY OF UTILITY BOARD		27	9	23	25	24	34	31	75	44	33	14	32	371
LOCAHAPOKA WATER AUTHORITY		51	87	76	60	66	53	47	97	64	66	37	74	778
LOXLEY, TOWN OF		77	73	74	84	90	117	118	110	61	83	49	54	990
LYNN WATER WORKS		1	5	10	4	3	7	3	1	4	4	9	6	57
MADISON, CITY OF PUBLIC WORKS DEPARTMENT		325	346	405	371	423	535	452	554	467	459	407	378	5,122
MADISON, CITY OF PUBLIC WORKS DEPARTMENT - E		9	14	12	6	11	8	7	15	8	20	8	6	124
MADISON, CITY OF WATER AND WASTEWATER		304	337	396	361	440	543	477	591	469	470	439	396	5,223
MADISON RIVER COMMUNICATIONS		288	247	224	249	202	253	194	213	177	200	159	153	2,559
MAGELLAN MIDSTREAM PARTNERS, LP		10	3	12	4	2	1	5	1	1	0	1	1	41
MAPLESVILLE WATERWORKS & GAS		9	18	16	21	30	31	18	48	25	24	21	12	273
MARSHALL COUNTY GAS		188	186	246	230	219	378	256	336	217	264	237	201	2,958
MARSHALL COUNTY GAS - 02		153	120	201	153	150	206	192	175	172	152	128	148	1,950
MARSHALL COUNTY GAS - 03		90	71	110	88	80	77	61	80	63	60	54	53	887
MARSHALL DEKALB ELECTRIC COOPERATIVE		230	258	304	258	278	318	296	346	316	284	210	290	3,388
MEDIACOM		553	540	881	821	915	933	692	819	754	781	527	524	8,740
MEDIACOM 02		215	226	293	331	234	261	243	277	238	216	215	207	2,956
MEDIACOM 03		412	401	512	350	411	387	423	512	493	496	291	290	4,978
MEDIACOM 04		612	621	709	601	677	787	670	714	636	668	547	498	7,740
MEDIACOM - HUNTSVILLE		343	387	533	531	691	801	765	863	703	562	437	618	7,234
MCB WATER AUTHORITY		9	12	10	4	7	10	14	19	27	26	21	1	160
MCCALL WATER SYSTEM		53	73	79	89	108	83	84	108	100	101	89	60	1,027
MCI TELECOM		802	942	1,108	831	911	885	780	1,001	782	777	743	652	10,214
MILLRY TELEPHONE		41	85	89	92	98	109	85	129	83	70	54	44	979
MITCHELL WATER SYSTEM, INC.		50	35	48	33	43	62	45	33	39	53	39	44	524
MOBILE, CITY OF 01		1,121	1,142	1,359	1,100	1,224	1,556	1,884	2,068	842	1,872	813	1,440	16,421
MOBILE, CITY OF 01 -E		84	91	105	104	87	84	86	119	75	85	94	113	1,127
MOBILE, CITY OF 02								881	955	842	870	837	680	5,065
MOBILE GAS		2,058	2,015	2,605	2,277	2,392	2,547	2,106	2,509	2,292	2,123	1,820	1,648	26,392
MOBILE COUNTY WATER, SEWER AND FPA		206	236	358	291	349	368	282	336	288	275	230	216	3,435
MOBILE COUNTY WATER, SEWER AND FPA - E		8	8	9	12	7	17	17	18	18	13	10	7	144
MOBILE WATER & SEWER		1,444	2,840	3,628	1,906	1,595	1,704	1,369	1,601	1,410	1,385	1,225	1,116	21,223
MOMENTUM TELECOM		0	0	1	0	2	0	1	5	5	2	8	2	26
MONROE GAS STORAGE COMPANY, LLC		0	0	0	0	0	0	0	2	0	2	0	0	4
MONROEVILLE WATER WORKS		47	47	38	23	15	22	23	31	29	30	20	10	335
MONROEVILLE, CITY OF WASTEWATER DEPARTMENT		44	45	41	24	14	19	21	31	28	33	24	9	333
MONTEVALLO WATER		77	92	73	80	82	98	65	78	98	68	41	52	904
MOULTON GAS		49	69	84	73	65	86	77	79	68	93	75	46	864
MOUNDVILLE TELEPHONE		54	58	45	43	66	46	41	63	35	42	30	32	555
MT VERNON WATER & GAS		31	13	20	23	34	24	21	13	9	29	16	23	256
MULGA		20	29	28	17	51	55	92	167	127	43	13	16	658
MUSCLE SHOALS, CITY OF UTILITIES BOARD		102	119	159	157	141	215	198	150	132	116	116	120	1,725
NATIONAL TELEPHONE OF ALABAMA DBA TEC		8	11	27	44	10	60	25	28	19	23	15	8	278
NATURAL GAS SOLUTIONS		2	2	4	4	10	2	14	8	10	18	4	6	84
NEW HOPE TELEPHONE		40	82	83	40	39	47	31	58	38	40	51	46	595
NORTH AL GAS 01		195	178	271	296	304	361	347	295	276	263	221	212	3,219
NORTH AL GAS 02		558	627	760	767	1,008	1,155	1,136	1,266	961	885	724	716	10,563
NORTH AL GAS 03		55	57	64	85	94	70	82	88	79	70	69	58	871
NORTH BALDWIN UTILITIES		117	141	171	158	171	176	154	191	168	138	141	156	1,882
NORTHEAST MORGAN COUNTY WATER AUTHORITY		104	144	115	277	205	153	96	151	110	108	110	77	1,650
NORTHWEST AL GAS		135	213	220	176	224	354	291	339	278	287	206	148	2,871
NORTHWEST AL GAS - E		14	8	9	58	10	5	8	15	8	11	7	11	164
NOTASULGA, TOWN OF		16	10	12	9	8	9	21	15	10	6	7	7	130
OAKMAN TELEPHONE COMPANY		55	31	63	36	25	57	14	21	18	13	16	12	361
OGP OPERATING, INC		0	4	2	2	3	10	6	1	6	5	1	1	41
OTELCO TELEPHONE, LLC		33	34	40	22	46	33	21	32	23	44	51	25	404
OTELCO TELEPHONE, LLC - E		0	0	0	0	0	0	0	0	0	0	0	0	-
OTELCO TELEPHONE - BLOUNTSVILLE DIVISION		17	29	25	12	24	23	14	58	41	38	40	22	343
OTELCO TELEPHONE, LLC/WALNUT GROVE		24	54	44	60	30	72	56	84	160	56	72	30	742
ONEONTA UTILITIES		135	154	151	153	123	222	122	164	147	169	115	120	1,775
OPELIKA HOUSING AUTHORITY		3	1	1	1	2	0	0	0	0	5	10	7	30
OPELIKA POWER SERVICES		204	185	351	270	163	243	276	263	468	387	494	483	3,787
OPELIKA WATER		284	251	840	440	247	335	347	385	561	489	557	541	5,277
OPELIKA WATER - E		18	9	20	12	14	21	11	14	20	21	17	20	197
OPP HOUSING AUTHORITY		1	0	0	1	8	0	0	2	0	0	0	1	13
ORANGE BEACH WASTEWATER TREATMENT PLANT		99	109	113	108	94	116	102	101	123	82	94	83	1,224
ORANGE BEACH WATER, SEWER AND FPD		76	95	95	91	79	105	91	93	112	71	84	74	1,066
OWASSA BROWNVILLE WATER			16	24	15	30	27	14	16	25	40	28	10	245
PALMER PETROLEUM, INC.		16	12	9	9	10	4	9	12	14	13	8	5	121
PARKER CREEK WATER COMPANY, LLC		3	2	5	5	2	5	10	7	3	12	4	8	66
PERDIDO BAY WATER, SEWER & FPD		43	63	71	52	50	37	24	37	60	46	32	31	546

MEMBER	Jan-11	Feb-11	Mar-11	Apr-11	May-11	Jun-11	Jul-11	Aug-11	Sep-11	Oct-11	Nov-11	Dec-11	2011 YTD
PHIL CAMPBELL HOUSING AUTHORITY	3	3	4	3	17	22	12	13	8	7	4	5	101
PHIL CAMPBELL WATER WORKS & SEWER BOARD	10	33	19	23	54	73	41	59	48	56	33	26	475
PICKENS COUNTY GAS	58	49	101	37	50	15	66	36	29	14	5	45	505
PIEDMONT HOUSING AUTHORITY	3	5	4	1	1	25	4	2	4	10	5	20	84
PIEDMONT WATER, SEWER, & GAS BD	14	22	36	28	11	78	34	44	29	38	16	41	391
PINE BELT TELEPHONE COMPANY	61	76	87	86	97	126	119	129	99	153	92	87	1,212
PINE BLUFF WATER AUTHORITY	7	8	12	15	16	6	14	32	10	11	9	5	145
PINE ENERGIES	32	14	13	1	20	3	3	2	3	2	3	1	97
PLAINS MARKETING, LP	78	129	91	46	30	48	45	61	55	49	34	36	702
PLANTATION PIPELINE	272	418	350	312	389	355	351	399	384	278	320	243	4,071
POARCH CREEK INDIANS UTILITIES	11	14	17	25	20	27	34	39	13	22	17	13	252
PRAXAIR, INC.	12	0	0	0	4	0	0	0	4	0	0	0	20
PROCALL SERVICES	131	103	127	85	99	90	83	117	91	110	66	82	1,184
QUANTUM RESOURCES MGT LLC	6	10	16	4	12	6	0	50	60	48	54	36	302
QWEST COMMUNICATIONS	123	113	107	115	112	124	113	123	99	104	93	87	1,313
RED BAY WATER AND GAS BOARD	12	16	41	17	22	12	18	23	11	27	19	7	225
RIVIERA UTILITIES (01)	492	529	564	489	549	669	531	594	509	502	447	428	6,303
RIVIERA UTILITIES (02)	347	370	535	474	393	491	428	458	466	403	324	308	4,997
ROANOKE, UTILITIES BOARD OF THE CITY OF	34	32	14	21	23	16	11	20	16	12	6	5	210
ROANOKE TELEPHONE COMPANY	48	61	31	42	57	56	43	81	39	23	13	16	510
ROBERTSDALE, CITY OF	63	50	88	81	69	90	77	82	75	84	65	55	879
ROBINSON'S BEND OPERATING COMPANY	39	31	33	17	34	28	31	52	32	29	39	31	396
ROCKFORD WATER & GAS	4	16	23	9	13	7	3	10	24	10	8	4	131
RUSSELLVILLE GAS BOARD	66	57	108	88	120	113	106	120	159	136	128	80	1,281
SAMSON RESOURCES COMPANY	15	15	24	17	17	24	14	22	20	20	19	16	223
SARALAND WATER SERVICE	35	37	68	42	30	36	37	64	65	43	41	43	541
SARALAND, CITY OF	62	63	103	83	64	75	66	84	87	65	59	57	868
SCOTTSBORO ELECTRIC POWER BOARD	56	58	65	70	79	103	94	69	86	99	88	62	929
SCOTTSBORO HOUSING AUTHORITY	7	2	8	3	5	5	2	2	4	7	3	1	49
SCOTTSBORO WATER, SEWER & GAS	126	136	144	154	168	224	206	158	186	228	186	132	2,048
SELLERS STATION WATER AUTHORITY	3	8	2	12	27	12	15	19	13	13	9	8	141
SELMA HOUSING AUTHORITY	37	63	51	31	51	75	39	69	46	50	72	68	652
SG RESOURCES, MISSISSIPPI, LLC	3	21	15	16	16	24	12	16	8	12	8	8	159
SHEFFIELD UTILITIES	195	202	239	272	302	311	304	317	281	271	212	163	3,069
SHELBY COUNTY WATER SERVICES	195	222	333	368	348	321	275	399	278	298	237	314	3,588
SHELL CHEMICAL	12	13	10	14	16	8	9	20	10	20	8	3	143
SHELL CHEMICAL - E	1	1	0	2	0	0	1	1	1	3	1	0	11
SHELL WESTERN E&P, INC. YELLOWHAMMER	8	8	4	0	2	0	2	0	3	0	4	2	33
SHELL WESTERN E&P, INC. YELLOWHAMMER - MOBILE PLANT LINES 02	54	17	11	20	17	12	15	35	3	39	11	11	245
SILVERHILL, TOWN OF	30	19	34	26	15	33	26	29	25	26	27	25	315
SINGING RIVER ELECTRIC POWER ASSOCIATION	5	5	5	2	6	6	2	3	1	0	0	0	35
SLOCOMB WATER AND SEWER BOARD	6	9	12	10	1	12	7	15	11	7	10	13	113
SMITHS WATER AND SEWER AUTHORITY	184	223	231	205	212	256	189	254	200	173	163	123	2,413
SOUTH ALABAMA ELECTRIC COOPERATIVE	86	84	126	116	119	137	220	133	108	144	128	130	1,531
SOUTH ALABAMA GAS DISTRICT - 01	99	113	102	91	130	98	97	110	129	143	85	82	1,279
SOUTH ALABAMA GAS DISTRICT - 02	127	102	100	48	66	59	50	75	64	61	47	24	823
SOUTH ALABAMA GAS DISTRICT - 03	7	23	32	18	23	13	19	43	48	43	41	31	341
SOUTH ALABAMA GAS DISTRICT - 04	12	8	17	10	18	17	12	31	20	15	12	12	184
SOUTH ALABAMA UTILITIES	571	539	751	648	694	789	597	835	685	679	475	449	7,712
SOUTH ALABAMA UTILITIES - E	16	20	35	31	20	22	27	31	35	25	15	18	295
SOUTH EASTERN DEVELOPMENT CORPORATION	3	1	3	5	13	5	11	14	7	16	3	3	84
SOUTHCROSS ENERGY GP LLC	48	52	52	64	52	76	72	132	132	136	160	140	1,116
SOUTHEAST ALABAMA GAS - ALL DISTRICTS	979	1,026	1,304	1,409	1,224	1,719	1,365	1,670	1,405	1,547	1,348	1,084	16,080
SOUTHEAST SUPPLY HEADER	30	42	58	46	118	150	63	117	75	66	21	87	873
SOUTH OF DAUPHIN APARTMENTS	0	0	0	1	0	1	0	0	3	1	0	2	8
SOUTHERN EARTH SCIENCES, INC.	19	16	12	22	21	15	14	20	46	22	11	11	229
SOUTHERN LIGHT, LLC	666	701	808	715	696	797	719	796	777	709	679	555	8,618
SO GAS TRANSMISSION	48	6	40	30	30	18	20	30	36	18	16	2	294
SO GAS TRANSMISSION - E	24	3	20	15	15	9	10	15	18	9	8	1	147
SO NAT GAS-ANNISTON	108	139	169	164	185	173	168	206	191	160	111	113	1,887
SO NAT GAS - AUBURN	389	107	461	395	144	167	126	149	268	118	159	144	2,627
SO NAT GAS-BHAM	286	254	316	274	316	348	317	411	288	332	252	213	3,607
SO NAT GAS - ELMORE	32	77	100	44	43	38	85	92	85	108	52	31	787
SO NAT GAS - GALLION	33	21	26	26	24	25	19	22	18	29	10	8	261
SO NAT GAS-PELIKA	91	105	113	114	104	86	91	169	95	85	72	75	1,200
SO NAT GAS - THOMASVILLE	1	5	4	0	6	4	7	1	5	4	2	4	43
SO NAT GAS - THOMASVILLE - E	1	1	1	0	3	0	1	1	2	0	1	0	11
SO NAT GAS-TUSCALOOSA	93	36	42	40	49	37	38	60	63	66	57	45	626
SOUTHERN POWER COMPANY	1	1	2	2	5	1	7	4	5	9	2	3	42
SPANISH FORT WATER SYSTEM	116	70	86	103	86	93	64	100	89	71	74	66	1,018
SPOONER PETROLEUM COMPANY	2	2	3	1	1	0	4	7	1	4	2	1	28
SPOONER PETROLEUM COMPANY - E	2	2	3	1	1	0	4	7	1	4	2	1	28
SPRING CREEK APARTMENTS	15	4	11	14	11	20	23	14	4	14	8	2	140
SPRINT	214	171	206	195	163	156	203	239	248	180	129	95	2,199
SOUTHERN BELL GA	68	41	89	71	48	46	42	21	29	14	17	18	504
ST SERVICES	7	11	14	18	10	24	13	12	9	14	6	0	138

MEMBER	Jan-11	Feb-11	Mar-11	Apr-11	May-11	Jun-11	Jul-11	Aug-11	Sep-11	Oct-11	Nov-11	Dec-11	2011 YTD	
MEMBER														
STEVENSON, UTILITIES BD OF THE TOWN OF	8		24	18	20	27	24	67	32	22	15	26	11	294
STEVENSON, UTILITIES BD OF THE TOWN OF - E	0		2	1	0	2	0	4	1	2	1	1	0	14
STEWARTVILLE WATER AUTHORITY	15		38	37	35	39	16	14	17	18	17	21	4	271
SULLIGENT HOUSING AUTHORITY	0		1	5	7	11	5	2	21	5	1	3	0	61
SUMMERDALE, TOWN OF	21		15	17	16	15	9	21	18	13	27	8	9	189
SUMITON GAS BOARD	19		28	40	45	15	11	20	13	17	16	12	7	243
SYLACAUGA HOUSING AUTHORITY	29		29	48	42	41	46	32	35	23	15	20	11	371
SYLACAUGA HOUSING AUTHORITY - E	2		2	0	2	1	4	4	3	2	0	7	2	29
SYLACAUGA UTILITIES BOARD	138		119	201	226	233	242	251	226	150	150	134	108	2,178
TALLADEGA HOUSING AUTHORITY	22		17	23	57	15	36	18	37	16	30	15	26	312
TALLADEGA WATER AND SEWER BOARD	180		130	102	125	75	152	112	156	103	114	116	100	1,465
TALLAPOOSA RIVER ELECTRIC COOPERATIVE	402		394	588	450	456	561	483	568	462	525	396	401	5,686
TALLASSEE, CITY OF	24		18	30	27	20	33	34	37	76	89	69	60	517
TALLASSEE HOUSING AUTHORITY	1		0	0	5	2	2	5	14	37	63	52	45	226
TDS TELECOM - CENTRE	117		97	107	122	153	147	126	193	177	168	140	105	1,652
TDS TELECOM - BUTLER	33		22	40	29	37	31	29	135	56	34	31	23	500
TDS TELECOM - GOSHEN	6		5	8	5	17	8	3	10	9	10	6	10	97
TDS TELECOM - GROVE HILL	20		14	33	20	15	25	27	18	23	30	17	27	269
TELEPAK NETWORKS	131		103	122	85	99	90	84	117	91	110	66	82	1,180
TENASKA ALABAMA PARTNERS	0		2	1	1	2	1	5	6	1	4	1	2	26
TENNESSEE GAS PL 01	3		3	7	4	6	5	9	7	7	6	3	1	61
TENNESSEE GAS PL 02	2		3	1	1	3	4	2	8	6	0	3	1	34
TENNESSEE GAS PL 03	8		9	11	10	5	8	6	4	4	7	20	1	93
TEXAS EASTERN GAS 01	8		11	20	26	36	29	34	12	16	25	15	8	240
TEXAS EASTERN GAS 02	1		0	1	6	2	1	2	2	4	0	1	1	21
TEXAS EASTERN GAS - E	0		0	0	0	0	0	0	1	1	0	0	0	2
THORSBY, TOWN OF	11		10	12	10	16	20	31	32	22	20	8	10	202
TOWER CLOUD												130	121	251
TRANSCO PL-01	4		13	19	8	108	20	8	34	13	12	11	12	262
TRANSCO PL-01 - E	0		0	0	5	0	18	0	0	0	0	0	0	23
TRANSCO PL-02	16		22	14	27	45	89	44	16	14	34	6	10	337
TRANSCO PL-03	14		11	30	15	34	23	16	23	16	13	13	26	234
TRANSCO PL-04	37		32	37	34	85	1	28	156	25	25	15	17	492
TRANSCO PL-04 - E	0		0	0	0	0	0	0	0	0	0	0	0	-
TRANSCO PL-05 - Pascagoula							1	15	9	4	1	0	0	30
TROY CABLEVISION	231		307	308	414	329	373	300	364	283	421	528	455	4,313
TRUSSVILLE UTILITIES	401		370	490	424	430	430	379	512	391	371	354	384	4,936
TURNERVILLE WATER AND FPD	41		49	48	56	35	61	44	47	66	63	33	30	573
TURNERVILLE WATER AND FPD - E	0		0	0	0	0	0	0	0	0	0	0	0	-
TUSKEGEE, UTILITIES BOARD OF THE CITY OF	78		57	64	78	124	143	139	140	127	117	62	57	1,186
TUSCALOOSA, CITY OF	615		565	867	749	1,164	1,416	1,377	1,219	1,069	992	728	790	11,551
TUSCUMBIA GAS	78		67	69	81	62	107	113	98	79	85	58	42	939
TUSCUMBIA HOUSING AUTHORITY	37		28	27	42	29	41	52	49	34	39	36	15	429
TUSCUMBIA HOUSING AUTHORITY - E	0		0	0	0	0	0	0	0	0	0	0	0	-
tw TELECOM - 01 (formerly Xspedius)							87	57	59	37	62	47	39	388
tw TELECOM - 02 (formerly Xspedius)							339	280	280	327	289	287	198	2,000
tw TELECOM - 03 (formerly Xspedius)							125	65	64	71	64	69	50	508
tw TELECOM - 04 (formerly ICG)							241							241
UNION SPRINGS TELEPHONE CO.	303		385	463	378	327	381	340	393	347	309	234	213	4,073
UNION SPRINGS UTILITIES BOARD	0		9	6	3	4	2	2	4	16	3	0	1	50
UNION SPRINGS UTILITIES BOARD - E	0		0	0	0	0	0	0	0	0	0	0	0	-
UNOCAL CORPORATION	23		16	16	13	9	21	18	22	25	22	19	6	210
UNIVERSITY OF ALABAMA IN HUNTSVILLE	11		26	26	19	18	1	13	15	12	4	8	6	159
URIAH WATER SYSTEM	8		10	17	11	9	18	13	31	35	13	5	9	179
US AMINES	66		50	78	31	58	54	48	62	52	56	44	24	623
US STEEL	4		8	4	7	5	5	3	10	9	9	4	3	71
USG PIPELINE COMPANY	0		0	0	0	0	0	0	0	0	0	0	0	-
USIC, Inc. (formerly CLS)							11,869	17,213	19,822	16,903	18,142	15,390	14,328	113,667
UTILIQUEST	3,091		2,689	3,420	3,049	3,078	3,377	2,876	3,309	3,036	0	0	0	27,925
UTILIQUEST - GA	68		41	89	71	48	46	42	21	29	14	17	18	504
VAW WATER SYSTEM, INC.	90		126	125	106	120	107	140	141	129	128	62	76	1,350
VERNON HOUSING AUTHORITY	7		4	1	2	1	6	5	3	16	3	2	4	54
VERNON WATER AND SEWER BOARD	12		15	8	7	14	18	20	19	27	16	10	9	175
VINA NATURAL GAS	10		11	7	5	3	2	1	7	5	4	7	1	63
WADLEY, TOWN OF	11		5	3	2	2	2	5	1	1	9	19	17	77
WARRIOR RIVER WATER AUTHORITY	158		162	212	174	166	186	163	278	254	269	307	158	2,487
WEATHERLY UTILITY SERVICES, LLC	20		14	40	27	19	24	12	27	32	19	43	33	310
WEDOWEE, TOWN OF	28		25	34	34	31	42	71	51	44	41	53	90	544
WEST JEFFERSON	4		9	7	13	5	2	1	11	5	2	4	10	73
WEST MORGAN-EAST LAWRENCE WATER	123		153	218	183	200	286	209	223	181	204	142	156	2,278
WHEELER BASIN NATURAL GAS COMPANY	101		122	138	248	179	166	130	170	130	125	92	103	1,704
WHITEHOUSE WATER SYSTEM	28		30	40	35	46	31	40	33	47	32	35	28	425
WILCOX COUNTY GAS DISTRICT	15		15	20	15	15	14	15	28	12	20	14	53	236
WILLIAMS FIELD SERVICES	0		0	0	1	5	0	0	0	0	1	0	1	8
WILTON, TOWN OF	11		10	10	13	42	18	21	11	15	11	7	7	176
WINDSTREAM 01	279		290	418	400	402	511	489	546	373	437	301	220	4,666

MEMBER	Jan-11	Feb-11	Mar-11	Apr-11	May-11	Jun-11	Jul-11	Aug-11	Sep-11	Oct-11	Nov-11	Dec-11	2011 YTD	
WINDSTREAM 02	57		85	101	55	86	97	72	98	92	109	85	58	995
WINFIELD HOUSING AUTHORITY	2	1	4	1	1	7	2	2	3	3	4	3	3	33
WIREGRASS ELECTRIC COOPERATIVE, INC	134	157	233	243	232	248	225	255	200	166	161	205	2,459	
XSPEDIUS - MONTGOMERY 01	84	72	108	98	88								450	
XSPEDIUS - BIRMINGHAM 02	219	193	261	249	258								1,180	
XSPEDIUS - MOBILE 03	163	188	182	143	164								840	
YORK, CITY OF	3	2	14	9	2	4	8	7	6	3	5	3	66	

ALABAMA 811 INCOMING CALL DISTRIBUTION REPORT - 2011

COUNTY	JAN	FEB	MAR	APR	MAY	JUNE	JULY	AUG	SEPT	OCT	NOV	DEC	TOTALS
AUTAUGA	798	771	601	349	372	595	423	433	338	273	269	263	5,485
BALDWIN	1,264	1,316	1,586	1,404	1,384	1,631	1,426	1,583	1,479	1,400	1,226	1,163	16,862
BARBOUR	116	109	114	103	104	107	102	152	86	87	61	65	1,206
BIBB	90	112	135	113	201	131	125	159	115	115	109	124	1,529
BLOUNT	95	136	158	112	138	178	112	199	177	160	125	81	1,671
BULLOCK	6	17	12	12	6	7	10	16	28	16	7	6	143
BUTLER	73	92	132	120	80	109	64	95	76	109	79	46	1,075
CALHOUN	444	501	731	473	448	629	567	703	560	599	584	572	6,811
CHAMBERS	184	241	214	160	159	181	169	194	163	192	207	170	2,234
CHEROKEE	106	79	81	106	132	139	123	168	144	137	109	76	1,400
CHILTON	198	204	286	278	282	305	254	301	248	191	194	137	2,878
CHOCTAW	34	22	43	28	43	38	32	154	60	38	32	24	548
CLARKE	116	115	160	144	101	123	126	141	137	166	104	103	1,536
CLAY	46	57	157	74	67	66	55	76	53	66	44	29	790
CLEBURNE	129	132	155	124	82	83	109	116	129	99	65	67	1,290
COFFEE	131	107	149	151	163	185	172	165	167	209	129	139	1,867
COLBERT	296	286	382	424	410	509	489	429	369	365	305	265	4,529
CONECUH	89	72	70	57	114	79	65	64	97	138	68	61	974
COOSA	34	56	67	56	56	56	44	67	98	37	44	39	654
COVINGTON	82	95	107	97	100	94	111	101	114	142	96	68	1,207
CRENSHAW	18	15	33	29	27	17	17	36	23	43	27	27	312
CULLMAN	430	504	666	498	754	938	695	857	686	570	382	464	7,444
DALE	303	379	391	474	357	644	430	660	549	495	469	393	5,544
DALLAS	165	179	208	155	202	229	192	308	221	236	227	233	2,555
DEKALB	71	91	109	97	71	311	108	147	111	163	111	142	1,532
ELMORE	403	491	627	486	423	531	444	644	574	594	484	399	6,100
ESCAMBIA	169	185	234	228	188	219	254	298	261	283	200	154	2,673
ETOWAH	307	329	355	393	379	402	378	441	449	475	402	353	4,663
FAYETTE	54	40	61	80	55	99	68	112	102	88	108	164	1,031
FRANKLIN	64	92	154	114	180	174	131	211	202	198	197	90	1,807
GENEVA	42	71	95	83	54	69	64	66	58	67	55	136	860
GREENE	36	42	57	60	44	55	43	67	47	98	58	37	644
HALE	102	124	85	76	92	112	101	135	93	103	75	59	1,157
HENRY	63	48	73	72	60	86	71	79	67	73	85	64	841
HOUSTON	313	337	428	458	397	511	407	434	352	335	342	272	4,586
JACKSON	105	134	151	136	180	225	305	184	164	201	172	122	2,079
JEFFERSON	3,524	3,827	4,500	3,730	4,207	4,891	4,502	5,081	4,468	4,406	3,603	3,428	50,167
LAMAR	37	54	56	55	64	82	81	122	106	60	41	23	781
LAUDERDALE	389	584	699	628	745	734	625	776	689	623	474	412	7,378
LAWRENCE	122	191	203	200	212	303	246	286	270	259	182	146	2,620
LEE	1,232	988	2,335	1,601	1,023	1,171	1,244	1,407	1,283	1,173	1,122	1,091	15,670
LIMESTONE	554	645	777	706	763	1,002	958	1,006	800	826	612	587	9,236
LOWNDES	53	29	46	38	95	55	71	84	75	114	96	136	892
MACON	113	98	118	105	151	159	180	174	192	150	91	77	1,608
MADISON	1,862	2,278	2,894	2,440	2,662	3,149	2,889	3,449	2,739	2,538	2,201	1,905	31,006
MARENGO	59	125	112	79	120	151	151	115	96	108	71	69	1,256
MARION	82	108	146	108	84	211	167	133	136	154	101	101	1,531
MARSHALL	318	292	427	347	334	497	404	419	331	363	316	300	4,348
MOBILE	2,218	2,200	2,806	2,423	2,545	2,758	2,313	2,763	2,447	2,324	1,901	1,695	28,393
MONROE	147	127	127	62	86	74	68	113	119	103	71	50	1,147
MONTGOMERY	1,331	1,521	1,918	1,802	1,495	1,792	1,542	1,661	1,502	1,492	1,396	1,215	18,667
MORGAN	553	672	809	840	726	799	666	857	737	645	617	490	8,411
PERRY	47	70	41	30	40	40	49	43	54	55	32	24	525
PICKENS	131	121	177	87	97	58	100	105	72	95	64	92	1,199
PIKE	76	97	140	139	139	181	225	132	112	111	117	104	1,573
RANDOLPH	99	99	120	100	119	141	169	161	134	89	116	132	1,479
RUSSELL	428	448	536	373	446	514	431	577	469	482	389	369	5,462
SHELBY	1,250	1,220	1,701	1,530	1,549	1,589	1,414	1,691	1,348	1,302	1,207	1,214	17,015
ST CLAIR	396	428	645	582	589	759	612	699	518	546	474	366	6,614
SUMTER	105	74	122	63	70	87	86	129	114	90	46	64	1,050
TALLADEGA	508	542	652	535	471	588	547	620	419	456	368	327	6,033
TALLAPOOSA	196	191	255	197	248	280	259	289	226	246	197	185	2,769
TUSCALOOSA	1,070	924	1,252	1,118	1,589	1,873	1,849	1,867	1,606	1,512	1,251	1,169	17,080
WALKER	224	352	339	284	250	326	304	367	295	442	191	237	3,611
WASHINGTON	40	64	70	76	78	89	64	102	73	52	50	33	791
WILCOX	32	32	42	27	31	32	37	38	23	32	27	34	387
WINSTON	137	175	163	79	79	79	105	103	82	86	75	63	1,226
TOTAL	24,310	26,157	33,295	28,208	29,012	34,331	30,644	35,364	30,132	29,495	24,750	22,745	348,442

**EXCAVATOR LOCATE REQUESTS WITH
LESS THAN 48 HOUR NOTICE
2011**

MONTH	EMERGENCY	PRIORITY	SHORT NOTICE	TOTAL LOCATE REQUESTS	PERCENTAGE
January	2,057	862	1,183	24,310	17%
February	2,032	1,090	1,235	26,157	17%
March	2,000	1,358	1,749	33,295	15%
April	1,756	981	1,239	28,208	14%
May	1,970	615	1,378	29,012	14%
June	2,309	1,293	1,900	34,331	16%
July	2,028	1,214	1,821	30,644	17%
August	2,526	1,279	1,445	35,364	15%
September	1,974	1,015	1,742	30,132	16%
October	1,985	1,071	1,336	29,495	15%
November	1,702	790	710	24,750	13%
December	1,803	688	985	22,745	15%
TOTAL	24,142	12,256	16,723	348,443	15%

2011 PUBLICITY AND ACTIVITIES

I. PUBLIC TALKS, PRESENTATIONS AND ASSOCIATION MEETINGS

AAPGMI Conference – Auburn, AL

AGC General Membership Meeting – Birmingham, AL

AGC Annual Golf Tournament – Birmingham, AL

Alabama Association of Volunteer Firefighters Conference – Point Clear, AL

Alabama Cable Telecommunications Association Convention –
Orange Beach, AL

Alabama Damage Prevention Alliance Meetings – Birmingham, AL

Alabama E-911 Conference – Orange Beach, AL

Alabama League of Municipalities Annual Convention – Huntsville, AL

Alabama Natural Gas Association Spring Seminar - Birmingham, AL

Alabama Natural Gas Association Annual Conference – Nashville, TN

Alabama PSC Gas Pipeline Safety Meeting – Montgomery, AL

Alabama Public Awareness Cooperative Training (APACT) Pipeline Safety
Meetings – Alexander City, Aliceville, Atmore, Calera, Decatur, Demopolis,
Fayette, Florence, Gadsden, Gardendale, Guntersville, Jackson, Mobile, Ozark,
Prattville, Robertsedale, Tuscaloosa, Tuskegee

Alabama Public Works Association Convention – Mobile, AL

Alabama Rural Electric Cooperative Association Convention – Montgomery, AL

Alabama Rural Water Association Convention – Montgomery, AL

Alabama Rural Water Association Operator EXPO – Montgomery, AL

Alabama Utility Contractors Association General Meetings – Montgomery, AL

Alabama Vegetation Management Society Conference – Tuscaloosa, AL

Alagasco Contractor 811 Presentation – Birmingham, AL

ALDOT Maintenance Bureau Management Conference - Mobile, AL

Association of County Engineer's Conference – Point Clear, AL

Benton Georgia Utility Contractors – Safety Presentation

Birmingham Area Municipalities Association EXPO – Gardendale, AL

Central Alabama Construction Safety Conference – Hyundai Plant, AL

CGA Excavation & Safety Conference – Orlando, FL

CGA Progressive Agriculture Safety Days – Autaugaville, AL

CGA Progressive Agriculture Safety Days – Livingston, AL

CGA Progressive Agriculture Safety Days – Robertsedale, AL

City of Fultondale Public Works Luncheon – Fultondale, AL

Community Awareness Day at Linn Park Birmingham, AL

Contractor Awareness Breakfast – Decatur Utilities, AL

Crestwood South Neighborhood Association – Birmingham, AL

Elberta Elementary School Water Carnival – Elberta, AL

GBAHB Building and Remodeling EXPO – Pelham, AL

Madison Public Works Safety Presentation – Madison, AL

Mississippi Damage Prevention Council Summit – Biloxi, MS

Montgomery Optimist Club – Montgomery, AL

Mobile UCC Annual Cookout and Safety Presentation – Mobile, AL

Pipeline Group Meeting – Prattville

Southern Gas Association Operating Conference – Jacksonville, FL

Southern Gas Association/ANGA Fall Seminar – Athens, AL

Utility Coordination Committee Quarterly Meetings – Birmingham, AL

Utility Coordination Committee Quarterly Meetings – Pelham, AL

Utility Coordination Committee Quarterly Meetings – Mobile, AL

II. ARTICLES AND PUBLICATIONS

Alabama County Commissioners Directory – Advertisement

Alabama County Commissioners Magazine – Advertisement (3)

Alabama Gardner Magazine – Advertisement

Associated General Contractors “Build Alabama Awards”
Banquet Program – Advertisement

Associated General Contractors Directory – Advertisement

Alabama League of Municipalities Journal – Advertisement (3)

Alabama League of Municipalities Membership Directory– Advertisement

Alabama Living Magazine - Editorial

Alabama Natural Gas Association Membership Directory - Advertisement

Alabama Rural Electric Association of Cooperatives Calendar - Advertisement

Alabama Rural Electric Association of Cooperatives Directory - Advertisement

Alabama Rural Water Association Directory – Advertisement

Alabama Rural Water Association – The Waterline – Quarterly Publication –
Advertisement 4 issues

Alabama Statewide Community Newspapers (109) – Advertisements
(2 weeks 218 ads)

Alabama Statewide Community Newspapers (109) – Alabama Power Company
Advertisements (2 weeks 218 ads)

Alabama Utility Contractors Association Newsletter – Advertisement

Bill Insert – Alabama Power

Bill Insert – Alagasco

Bill Inserts – AT&T

Bill Inserts – Cullman-Jefferson Gas

Birmingham Home & Garden – Parade of Homes Issue – Advertisement
BUILD South (AGC) Magazine – Advertisements

Calera Monthly – Calera Gas

Continental Airlines Magazine – Advertisement (Co-op with 11 One Call Centers)

Country Living – Advertisement (Co-op with 13 One Call Centers)

ESPN Magazine – Advertisement (Co-op with 11 One Call Centers)

Greater Birmingham Homebuilders Association Membership Directory -Ad

Helena City News – Advertisement – GeoMet

LINKS Golf Magazine – Advertisement – (Co-op with 7 other One Call Centers)

Martha Stewart Living – Advertisement – (Co-op with 13 other One Call Centers)

Pelham High School Football Program - Advertisement - GeoMet

Telecommunications Association of the Southeast Directory – Advertisement

The North Jefferson News - Fultondale Gas
Call 811 Before You Dig - Advertisement

The North Jefferson News - Cullman-Jefferson Gas
Call 811 Before You Dig - Advertisement

Southern Living Magazine – Advertisement

USA Today Super Bowl Preview – (Coop with 11 other One Call Centers)

Weather E-Forecast ABC 33/40 – Advertisement - Multiple Months

White Page Directory Listings for multiple telephone companies in Alabama

III. ADVERTISING BROADCAST MEDIA

al.com

- Statewide News and Information Website – Online Advertisements in sports section 6 weeks during college football season

Auburn University Radio Network-IMG

- “Tiger Talk” Program with Coach Chizik – Call 811 Before You Dig live mentions statewide
- (3) Post Game Shows – Live mentions

Auburn University Instant Replay Video Boards and Ribbon Boards

- Select home games at Jordan Hare Stadium

Birmingham Barons Baseball

- 5th Inning Promotion with 10 second Public Service Announcements at the Hoover Met and Alabama 811 logo on scoreboard

Clear Channel Radio Network

- WTXT Country and WRTR News – Talk station – West Alabama and Tuscaloosa markets “Call 811 Before You Dig” College Football Countdown

IWearYourShirt.com

- 5 YouTube videos on Twitter, Facebook, Ustream, and Flickr on August 11th in cooperative effort with Mark-It-Madness committee

National Safe Digging Month Governor Proclamation – April 2011

University of Alabama Crimson Tide Radio Network-CTSN

- “Hey Coach” Program with Coach Saban – Call 811 Before You Dig live mentions statewide
- (12) Post Game Shows – Live mentions
- (3) Post Game Shows – Thirty second radio commercials

University of Alabama Instant Replay Video Boards

- All seven home games at Bryant Denny Stadium

WJOX FM Sports Radio

- “Paul Finebaum Statewide Radio Network” and “The Opening Drive” 811 Radio Spots for March, April, May, July
- Region’s Memorial Golf Classic - Radio Sponsor – 10 second mentions and 60 second radio spots in May– Promoting 811
- SEC Baseball Tournament – Radio Sponsor – 10 second mentions
- SEC Media Days Live Broadcast at Wynfrey Hotel – WJOX FM and WSPZ AM Sponsorship (20) 10 second live mentions and (10) 30 second radio spots

IV. Alabama 811 Publications

Alabama 811 Magazine – Quarterly Publication

Annual Newsletter mailed to over 16,100 Excavators and Alabama 811 Members

Newsletter to Alabama 811 Membership

Pipeline Safety and Emergency Response Booklet for APACT program

Education materials and Alabama 811 handouts were mailed to the Contractors and Member Companies by request.

V. One-Call Meetings

Alabama Damage Prevention Committee Meetings

Common Ground Alliance Annual Meeting and Excavation Safety Conference – Orlando, FL

Common Ground Alliance Dig Safely Month Planning Conference Calls

Common Ground Alliance Regional Partners Meeting – Conference Call

Mark-It Madness Committee Meetings

One Calls of America – Semi Annual Meetings

One Calls of America Health Committee

One Call Systems International Data Collections Committee

One Call Systems International/CGA Meeting – Tempe, AZ

Partners in Training (PIT) Crew Training Committee Meetings

Progressive Partnering IT/GIS Development Council Meetings

Southeast Regional One Call Spring Meeting – Baton Rouge, LA

Southeast Regional One Call Fall Meeting – Pinehurst, NC

Southeast One Call Supervisors Conference – Orlando, FL